

Product datasheet for PH303377

TOE1 (NM_025077) Human Mass Spec Standard

Product data:

Product Type:	Mass Spec Standards
Description:	TOE1 MS Standard C13 and N15-labeled recombinant protein (NP_079353)
Species:	Human
Expression Host:	HEK293
Expression cDNA Clone or AA Sequence:	RC203377
Predicted MW:	56.5 kDa
Protein Sequence:	>RC203377 protein sequence Red=Cloning site Green=Tags(s)

MAADSDDGAVSAPAASDGGVSKSTTSGEELVVQVPVVDVQSNFEMWPSLLLAIKTANFVAVDTELSGL
GDRKSLLNQCIEERYKAVCHAARTRSILSLGLACFKRQPKGHEHSYLAQVFNLTLLCMEEYVIEPKSVQF
LIQHGFNFNQYQAQGIPIYHKGNDKGDESQSVRTLFLLEIRARRPLVLHNLIDLVFLYQNFYAHLPES
LGTFTADLCEMFAGIYDTKYAAEFHARFVASYLEYAFKRCERENGKQRAAGSPHLEFCNYPSSMRDH
IDYRCCLPPATHRPHPTSIDCNFSAYGWCPQPCQSHDIDLIDTDEAAAEDKRRRRRRREKRKRALL
NLPQTSGEAKDGPVKQVCGDSIKPEETEQEVADETRNLPHSKQGNKNDLEMGIKAAARPEIADRATS
EVPGSQASPNPVPDGLHRAGFADFMTGYVMAYVEVSQGPQPCSSGPWLPCHNKVYLSGKAVPLTVAKS
QFSRSSKAHNQMKMLTWGSS

TRTRPLEQKLISEEDLAANDILDYKDDDDKV

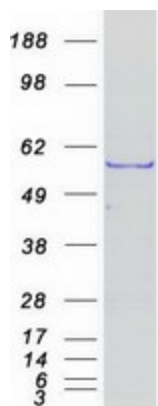
Tag:	C-Myc/DDK
Purity:	> 80% as determined by SDS-PAGE and Coomassie blue staining
Concentration:	>0.05 µg/µL as determined by microplate BCA method
Labeling Method:	Labeled with [U- ¹³ C ₆ , ¹⁵ N ₄]-L-Arginine and [U- ¹³ C ₆ , ¹⁵ N ₂]-L-Lysine
Buffer:	25 mM Tris-HCl, 100 mM glycine, pH 7.3
Storage:	Store at -80°C. Avoid repeated freeze-thaw cycles.
Stability:	Stable for 3 months from receipt of products under proper storage and handling conditions.
RefSeq:	NP_079353
RefSeq Size:	2408
RefSeq ORF:	1530



[View online »](#)

Synonyms:	hCaf1z; PCH7
Locus ID:	114034
UniProt ID:	Q96GM8
Cytogenetics:	1p34.1
Summary:	Inhibits cell growth rate and cell cycle. Induces CDKN1A expression as well as TGF-beta expression. Mediates the inhibitory growth effect of EGR1. Involved in the maturation of snRNAs and snRNA 3'-tail processing (PubMed:28092684).[UniProtKB/Swiss-Prot Function]
Protein Families:	Stem cell - Pluripotency, Transcription Factors

Product images:



Coomassie blue staining of purified TOE1 protein (Cat# [TP303377]). The protein was produced from HEK293T cells transfected with TOE1 cDNA clone (Cat# [RC203377]) using MegaTran 2.0 (Cat# [TT210002]).