

Product datasheet for PH303370

DEM1 (EXO5) (NM_022774) Human Mass Spec Standard

Product data:

Product Type:	Mass Spec Standards
Description:	DEM1 MS Standard C13 and N15-labeled recombinant protein (NP_073611)
Species:	Human
Expression Host:	HEK293
Expression cDNA Clone or AA Sequence:	RC203370
Predicted MW:	41.9 kDa
Protein Sequence:	>RC203370 protein sequence Red=Cloning site Green=Tags(s)

MAETREEETVSAEASGFSDLSDSEFLFLDLEDAQESKALVNMPGPSSSESLGKDDKPIISLQNWKRGLDIL
SPMERFHLKYL YVTDLATQNWCELQTAYGKELPGFLAPEKAAVLDTGASIHARELELHDLVTPVTTKE
DAWAIKFLNILLIIPTLQSEGHIREFPVFGEVEGVLLVGVDELHYTAKGELELAELKTRRRRPLPLEAQ
KKKDCFQVSLYKYIFDAMVQGVTPASLIHHTKLCLEKPLGPSVLRHAQQGGFSVKSLGDMELVFLSLT
LSDLPVIDILKIEYIHQETATVLGTEIVAFKEKEVRQVHYMAYWMGHREPQGVDEEAWKCRTCTYAD
ICEWRKGSGLSSTLAPQVKKAK

TRTRPLEQKLI SEEDLAANDILDYKDDDDKV

Tag:	C-Myc/DDK
Purity:	> 80% as determined by SDS-PAGE and Coomassie blue staining
Concentration:	>0.05 µg/µL as determined by microplate BCA method
Labeling Method:	Labeled with [U- ¹³ C ₆ , ¹⁵ N ₄]-L-Arginine and [U- ¹³ C ₆ , ¹⁵ N ₂]-L-Lysine
Buffer:	25 mM Tris-HCl, 100 mM glycine, pH 7.3
Storage:	Store at -80°C. Avoid repeated freeze-thaw cycles.
Stability:	Stable for 3 months from receipt of products under proper storage and handling conditions.
RefSeq:	NP_073611
RefSeq Size:	2217
RefSeq ORF:	1119
Synonyms:	C1orf176; DEM1; Exo V; hExo5
Locus ID:	64789



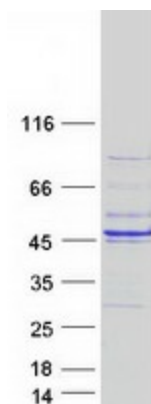
[View online »](#)

UniProt ID: [Q9H790](#)

Cytogenetics: 1p34.2

Summary: The protein encoded by this gene is a single-stranded DNA (ssDNA)-specific exonuclease that can slide along the DNA before cutting it. However, human replication protein A binds ssDNA and restricts sliding of the encoded protein, providing a 5'-directionality to the enzyme. This protein localizes to nuclear repair loci after DNA damage. [provided by RefSeq, Nov 2016]

Product images:



Coomassie blue staining of purified EXO5 protein (Cat# [TP303370]). The protein was produced from HEK293T cells transfected with EXO5 cDNA clone (Cat# [RC203370]) using MegaTran 2.0 (Cat# [TT210002]).