

Product datasheet for PH303341

LRR39 (NM_144620) Human Mass Spec Standard

Product data:

Product Type:	Mass Spec Standards
Description:	LRR39 MS Standard C13 and N15-labeled recombinant protein (NP_653221)
Species:	Human
Expression Host:	HEK293
Expression cDNA Clone or AA Sequence:	RC203341
Predicted MW:	38.8 kDa
Protein Sequence:	>RC203341 protein sequence Red=Cloning site Green=Tags(s) MTENVVCTGAVNAVKEVWEKRIKKLNEDLKREKEFQHKLVRIWEERVSLTKLREKVTREDGRVILKIEKE EWKTLPSLLKLNQLQEWQLHRTGLLKIPEF IGRFQNLIVLDLSRNTISEIPPGIGLLTRLQELILSYNK IKTVPKELSNCASLEKLELAVNRDICDLPQELSNLLKLTHLDLSMNDFTTIPLAVLNMPALEWLDMGSNK LEQLPDTIERMQNLHTLWLQRNEITCLPQTISNMKNLGTLLVLSNNKLDIPVCMEEMANLRFVNFDRNPL KLKVSLLPSEGTDEEEERELFGLQFMHTYIQESRRRADHQVNGSTTLPIISINTDG TRTRPLEQKLISEEDLAANDILDYKDDDDKV
Tag:	C-Myc/DDK
Purity:	> 80% as determined by SDS-PAGE and Coomassie blue staining
Concentration:	>0.05 µg/µL as determined by microplate BCA method
Labeling Method:	Labeled with [U- ¹³ C ₆ , ¹⁵ N ₄]-L-Arginine and [U- ¹³ C ₆ , ¹⁵ N ₂]-L-Lysine
Buffer:	25 mM Tris-HCl, 100 mM glycine, pH 7.3
Storage:	Store at -80°C. Avoid repeated freeze-thaw cycles.
Stability:	Stable for 3 months from receipt of products under proper storage and handling conditions.
RefSeq:	NP_653221
RefSeq Size:	1865
RefSeq ORF:	1005
Locus ID:	127495
UniProt ID:	Q96DD0



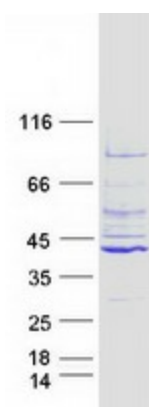
[View online »](#)

Cytogenetics: 1p21.2

Summary: Component of the sarcomeric M-band which plays a role in myocyte response to biomechanical stress. May regulate expression of other M-band proteins via an SRF-dependent pathway. Important for normal contractile function in heart.[UniProtKB/Swiss-Prot Function]

Protein Families: Druggable Genome

Product images:



Coomassie blue staining of purified LRRC39 protein (Cat# [TP303341]). The protein was produced from HEK293T cells transfected with LRRC39 cDNA clone (Cat# [RC203341]) using MegaTran 2.0 (Cat# [TT210002]).