

Product datasheet for PH303336

SLD5 (GINS4) (NM_032336) Human Mass Spec Standard

Product data:

Product Type:	Mass Spec Standards
Description:	GINS4 MS Standard C13 and N15-labeled recombinant protein (NP_115712)
Species:	Human
Expression Host:	HEK293
Expression cDNA Clone or AA Sequence:	RC203336
Predicted MW:	26 kDa
Protein Sequence:	>RC203336 protein sequence Red=Cloning site Green=Tags(s) MTEEVDFLGQSDGGSEEVVLTPAELIERLEQAWMNEKFAPELLESKPEIVECVMEQLEHMEENLRAKR EDLKVSIHQMEMERIRYVLSYLRCLMKIEKFFPHVLEKEKTRPEGEPSSLSPEELAFAREFMANTESY LKNVALKHMPNQLQKVDLFRVAVPKPDLDSYVFLRVRRERQENILVEPDTDEQRDYVIDLEKGSQHLIRYKT IAPLVASGAVQLI TRTRPLEQKLI SEEDLAANDILDYKDDDDKV
Tag:	C-Myc/DDK
Purity:	> 80% as determined by SDS-PAGE and Coomassie blue staining
Concentration:	>0.05 µg/µL as determined by microplate BCA method
Labeling Method:	Labeled with [U- ¹³ C ₆ , ¹⁵ N ₄]-L-Arginine and [U- ¹³ C ₆ , ¹⁵ N ₂]-L-Lysine
Buffer:	25 mM Tris-HCl, 100 mM glycine, pH 7.3
Storage:	Store at -80°C. Avoid repeated freeze-thaw cycles.
Stability:	Stable for 3 months from receipt of products under proper storage and handling conditions.
RefSeq:	<u>NP_115712</u>
RefSeq Size:	3841
RefSeq ORF:	669
Synonyms:	SLD5
Locus ID:	84296
UniProt ID:	<u>Q9BRT9</u>

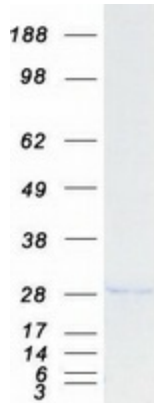


[View online »](#)

Cytogenetics: 8p11.21

Summary: The yeast heterotetrameric GINS complex is made up of Sld5, Psf1 (GINS1; MIM 610608), Psf2 (GINS2; MIM 610609), and Psf3 (GINS3; MIM 610610). The formation of the GINS complex is essential for the initiation of DNA replication in yeast and *Xenopus* egg extracts (Ueno et al., 2005 [PubMed 16287864]). See GINS1 for additional information about the GINS complex. [supplied by OMIM, Mar 2008]

Product images:



Coomassie blue staining of purified GINS4 protein (Cat# [TP303336]). The protein was produced from HEK293T cells transfected with GINS4 cDNA clone (Cat# [RC203336]) using MegaTran 2.0 (Cat# [TT210002]).