

Product datasheet for PH303332

CAP2 (NM_006366) Human Mass Spec Standard

Product data:

Product Type:	Mass Spec Standards
Description:	CAP2 MS Standard C13 and N15-labeled recombinant protein (NP_006357)
Species:	Human
Expression Host:	HEK293
Expression cDNA Clone or AA Sequence:	RC203332
Predicted MW:	52.8 kDa
Protein Sequence:	>RC203332 protein sequence Red=Cloning site Green=Tags(s)

MANMQGLVERLERAVSRLESLSAESHPPGNCGEVNGVIAGVAPSVAEFDKLMDSMVAEFLKNSRILAGD
VETHAEMVHSAFQAQRAFLLMASQYQPHENDVAALLKPISEKIQEIQTFRERNRGSNMFNHL SAVSESI
PALGWIAVSPKPGPYVKEMNDAATFYTNRVLDYKHSDLRHVDWVKSYLNIWSELQAYIKEHHTTGLTWS
KTGPVASTVSFVLSVSSGPGPLPPPPPLPPPGPPPLFENEGKKEESSPSRSALFAQLNQGEAITKGLRHV
TDDQKTYKNPSLRAQGGQTQSPTKSHTPSPTSPKSYPYQKHAPVLELEGKKWRVEYQEDRNDLVISETEL
KQVAYIFKCEKSTIQIKGVNSIIIDNCKKGLVFDNVVGIVEVINSQDIQIQVMGRVPTISINKTEGCH
IYLS DALDCEIVSAKSSEMNILIPQGDYREFPIPEQFKTAWDGSKLITPAEIMA

TRTRPLEQKLI SEEDLAANDILDYKDDDDKV

Tag:	C-Myc/DDK
Purity:	> 80% as determined by SDS-PAGE and Coomassie blue staining
Concentration:	>0.05 µg/µL as determined by microplate BCA method
Labeling Method:	Labeled with [U- ¹³ C ₆ , ¹⁵ N ₄]-L-Arginine and [U- ¹³ C ₆ , ¹⁵ N ₂]-L-Lysine
Buffer:	25 mM Tris-HCl, 100 mM glycine, pH 7.3
Storage:	Store at -80°C. Avoid repeated freeze-thaw cycles.
Stability:	Stable for 3 months from receipt of products under proper storage and handling conditions.
RefSeq:	<u>NP_006357</u>
RefSeq Size:	3080
RefSeq ORF:	1431
Locus ID:	10486



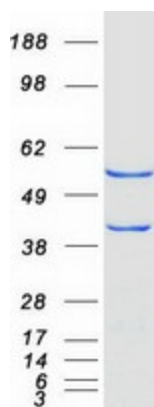
[View online »](#)

UniProt ID: [P40123](#), [Q5JPI8](#)

Cytogenetics: 6p22.3

Summary: This gene was identified by its similarity to the gene for human adenylyl cyclase-associated protein. The function of the protein encoded by this gene is unknown. However, the protein appears to be able to interact with adenylyl cyclase-associated protein and actin. [provided by RefSeq, Jul 2008]

Product images:



Coomassie blue staining of purified CAP2 protein (Cat# [TP303332]). The protein was produced from HEK293T cells transfected with CAP2 cDNA clone (Cat# [RC203332]) using MegaTran 2.0 (Cat# [TT210002]).