

Product datasheet for PH303306

UBE2B (NM_003337) Human Mass Spec Standard

Product data:

Product Type:	Mass Spec Standards
Description:	UBE2B MS Standard C13 and N15-labeled recombinant protein (NP_003328)
Species:	Human
Expression Host:	HEK293
Expression cDNA Clone or AA Sequence:	RC203306
Predicted MW:	17.1 kDa
Protein Sequence:	>RC203306 representing NM_003337 Red=Cloning site Green=Tags(s) MSTPARRRLMRDFKRLQEDPPVGVSGAPSENNIMQWNAVIFGPEGTPFEDGTFLVIEFSEEYPNKPPTV RFLSKMFHPNVYADGSICLDILQNRWSPTYDVSSILTSIQSLLDEPNPNSPANQAQLYQENKREYEKR VSAIVEQSWNDS TRTRPLEQKLISEEDLAANDILDYKDDDDKV
Tag:	C-Myc/DDK
Purity:	> 80% as determined by SDS-PAGE and Coomassie blue staining
Concentration:	>0.05 µg/µL as determined by microplate BCA method
Labeling Method:	Labeled with [U- ¹³ C ₆ , ¹⁵ N ₄]-L-Arginine and [U- ¹³ C ₆ , ¹⁵ N ₂]-L-Lysine
Buffer:	25 mM Tris-HCl, 100 mM glycine, pH 7.3
Storage:	Store at -80°C. Avoid repeated freeze-thaw cycles.
Stability:	Stable for 3 months from receipt of products under proper storage and handling conditions.
RefSeq:	<u>NP_003328</u>
RefSeq Size:	2631
RefSeq ORF:	456
Synonyms:	E2-17kDa; HHR6B; HR6B; RAD6B; UBC2
Locus ID:	7320
UniProt ID:	<u>P63146</u>



[View online »](#)

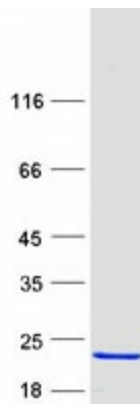
Cytogenetics: 5q31.1

Summary: The modification of proteins with ubiquitin is an important cellular mechanism for targeting abnormal or short-lived proteins for degradation. Ubiquitination involves at least three classes of enzymes: ubiquitin-activating enzymes, or E1s, ubiquitin-conjugating enzymes, or E2s, and ubiquitin-protein ligases, or E3s. This gene encodes a member of the E2 ubiquitin-conjugating enzyme family. This enzyme is required for post-replicative DNA damage repair. Its protein sequence is 100% identical to the mouse, rat, and rabbit homologs, which indicates that this enzyme is highly conserved in eukaryotic evolution. [provided by RefSeq, Jul 2008]

Protein Families: Druggable Genome

Protein Pathways: Ubiquitin mediated proteolysis

Product images:



Coomassie blue staining of purified UBE2B protein (Cat# [TP303306]). The protein was produced from HEK293T cells transfected with UBE2B cDNA clone (Cat# [RC203306]) using MegaTran 2.0 (Cat# [TT210002]).