

Product datasheet for PH303304

Cullin 2 (CUL2) (NM_003591) Human Mass Spec Standard

Product data:

Product Type:	Mass Spec Standards
Description:	CUL2 MS Standard C13 and N15-labeled recombinant protein (NP_003582)
Species:	Human
Expression Host:	HEK293
Expression cDNA Clone or AA Sequence:	RC203304
Predicted MW:	87 kDa
Protein Sequence:	>RC203304 protein sequence Red=Cloning site Green=Tags(s)

MSLKPRVVDDETWNKLLTTIKAVVMLEYVERATWDRFSDIYALCVAYPEPLGERLYTETKIFLENHVR
HLHKRVLESEEQVLVYMYHRYWEEYSKGADYMDCLYRYLNTQFIKKNKLEADLQYGGVDMNEPLMEIG
ELALDMWRKLMVEPLQAILIRMLLREIKNDRGGEDPNQKVIHGVINSFVHVEQYKKKFKFYQEIFESP
FLTETGEYKQAEASNLLQESNCSQYMEKVLGRLKDEEIRCRKYLHPSSYTKVIHECQQRMVADHLQFLHA
ECHNIIRQEKKNDMANMYVLLRAVSTGLPHMIQELQNHIDHDEGLRATSNLTQENMPTLFVESVLEVHGK
VQLINTVLNGDQHFMSALDKALTSVVNYREPKSVCKAPELLAKYCDNLLKKSAGMTENEVEDRLTSFIT
VFKYIDDKDVFQKFYARMLAKRLIHGLSMSMDSEEAMINKLKQACGYEFTSKLHRMYTDMVSADLNKFK
NNFIKNQDTVIDLGISFQIYVLQAGAWPLTQAPSSTFAIPQELEKSVQMFELFYSQHFSGRKLTWLHYLC
TGEVKMNYLGKPYVAMVTTYQMAVLLAFNNSSETVSYKELQDSTQMNKELTKTIKSLLDVKMINHDSEKE
DIDAESSFSLNMNFSKRTKFKITTSMQKDTPQEMEQRSAVDEDRKMYLQAAIVRIMKARKVLRHNALI
QEVISQSRARFNPSISMIKKCIEVLIDKQYIERSQASADEYSYVA

TRTRPLEQKLISEEDLAANDILDYKDDDDKV

Tag:	C-Myc/DDK
Purity:	> 80% as determined by SDS-PAGE and Coomassie blue staining
Concentration:	>0.05 µg/µL as determined by microplate BCA method
Labeling Method:	Labeled with [U- ¹³ C ₆ , ¹⁵ N ₄]-L-Arginine and [U- ¹³ C ₆ , ¹⁵ N ₂]-L-Lysine
Buffer:	25 mM Tris-HCl, 100 mM glycine, pH 7.3
Storage:	Store at -80°C. Avoid repeated freeze-thaw cycles.
Stability:	Stable for 3 months from receipt of products under proper storage and handling conditions.
RefSeq:	NP_003582



[View online »](#)

RefSeq Size: 4238

RefSeq ORF: 2235

Locus ID: 8453

UniProt ID: [Q13617](#), [A0A140VKB1](#)

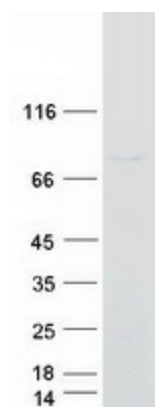
Cytogenetics: 10p11.21

Summary: Core component of multiple cullin-RING-based ECS (ElonginB/C-CUL2/5-SOCS-box protein) E3 ubiquitin-protein ligase complexes, which mediate the ubiquitination of target proteins. ECS complexes and ARIH1 collaborate in tandem to mediate ubiquitination of target proteins (PubMed:27565346). May serve as a rigid scaffold in the complex and may contribute to catalysis through positioning of the substrate and the ubiquitin-conjugating enzyme. The E3 ubiquitin-protein ligase activity of the complex is dependent on the neddylation of the cullin subunit and is inhibited by the association of the deneddylated cullin subunit with TIP120A/CAND1. The functional specificity of the ECS complex depends on the substrate recognition component. ECS(VHL) mediates the ubiquitination of hypoxia-inducible factor (HIF).[UniProtKB/Swiss-Prot Function]

Protein Families: Druggable Genome

Protein Pathways: Pathways in cancer, Renal cell carcinoma, Ubiquitin mediated proteolysis

Product images:



Coomassie blue staining of purified CUL2 protein (Cat# [TP303304]). The protein was produced from HEK293T cells transfected with CUL2 cDNA clone (Cat# [RC203304]) using MegaTran 2.0 (Cat# [TT210002]).