

Product datasheet for PH303303

RHOA (NM_001664) Human Mass Spec Standard

Product data:

Product Type:	Mass Spec Standards
Description:	RHOA MS Standard C13 and N15-labeled recombinant protein (NP_001655)
Species:	Human
Expression Host:	HEK293
Expression cDNA Clone or AA Sequence:	RC203303
Predicted MW:	21.8 kDa
Protein Sequence:	>RC203303 protein sequence Red=Cloning site Green=Tags(s) MAAIRKKLVIVGDGACGKTCLLIVFSKQDFPEVYVPTVFENYVADIEVDGKQVELALWDTAGQEDYDRLR PLSYPD TDVILMCF SIDSPDSLENIPEKWTPEVKHFPCNPVPIILVGNKKDLRNDEHTRRELAKMKQEPVK PEEGRDMANRIGAFGYMECSAKTKDGVREVFEMATRAALQARRGKKKSGCLVL TRTRPLEQKLI SEEDLAANDILDYKDDDDKV
Tag:	C-Myc/DDK
Purity:	> 80% as determined by SDS-PAGE and Coomassie blue staining
Concentration:	>0.05 µg/µL as determined by microplate BCA method
Labeling Method:	Labeled with [U- ¹³ C ₆ , ¹⁵ N ₄]-L-Arginine and [U- ¹³ C ₆ , ¹⁵ N ₂]-L-Lysine
Buffer:	25 mM Tris-HCl, 100 mM glycine, pH 7.3
Storage:	Store at -80°C. Avoid repeated freeze-thaw cycles.
Stability:	Stable for 3 months from receipt of products under proper storage and handling conditions.
RefSeq:	NP_001655
RefSeq Size:	1926
RefSeq ORF:	579
Synonyms:	ARH12; ARHA; EDFAOB; RHO12; RHOH12
Locus ID:	387
UniProt ID:	P61586 , A0A024R324 , Q9BVT0



[View online »](#)

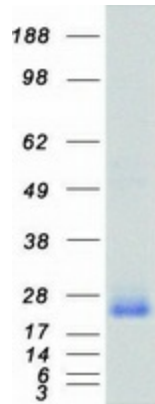
Cytogenetics: 3p21.31

Summary: This gene encodes a member of the Rho family of small GTPases, which cycle between inactive GDP-bound and active GTP-bound states and function as molecular switches in signal transduction cascades. Rho proteins promote reorganization of the actin cytoskeleton and regulate cell shape, attachment, and motility. Overexpression of this gene is associated with tumor cell proliferation and metastasis. Multiple alternatively spliced variants have been identified. [provided by RefSeq, Sep 2015]

Protein Families: Druggable Genome

Protein Pathways: Adherens junction, Axon guidance, Chemokine signaling pathway, Focal adhesion, Leukocyte transendothelial migration, Neurotrophin signaling pathway, Pathogenic Escherichia coli infection, Pathways in cancer, Regulation of actin cytoskeleton, T cell receptor signaling pathway, TGF-beta signaling pathway, Tight junction, Vascular smooth muscle contraction, Wnt signaling pathway

Product images:



Coomassie blue staining of purified RHOA protein (Cat# [TP303303]). The protein was produced from HEK293T cells transfected with RHOA cDNA clone (Cat# [RC203303]) using MegaTran 2.0 (Cat# [TT210002]).