

## Product datasheet for PH303296

### Ferritin Light Chain (FTL) (NM\_000146) Human Mass Spec Standard

#### Product data:

Product Type:	Mass Spec Standards
Description:	FTL MS Standard C13 and N15-labeled recombinant protein (NP_000137)
Species:	Human
Expression Host:	HEK293
Expression cDNA Clone or AA Sequence:	RC203296
Predicted MW:	20 kDa
Protein Sequence:	>RC203296 protein sequence Red=Cloning site Green=Tags(s)  MSSQIRQNYSTDVEAAVNSLVNLYLQASYTYLSLGFYFDRDDVALEGVSHFFRELAEEKREGYERLLKMQ NQRGGRALFQDIKKPAEDEWGKTPDAMKAAMALEKKNQALLDLHALGSARTDPHLCDFLETHFLDEEVK L.IKKMGDHLTNLHRLGGPEAGLGEYLFERLTLKHD  TRTRPLEQKLI SEEDLAANDILDYKDDDDKV
Tag:	C-Myc/DDK
Purity:	> 80% as determined by SDS-PAGE and Coomassie blue staining
Concentration:	>0.05 µg/µL as determined by microplate BCA method
Labeling Method:	Labeled with [U- 13C6, 15N4]-L-Arginine and [U- 13C6, 15N2]-L-Lysine
Buffer:	25 mM Tris-HCl, 100 mM glycine, pH 7.3
Storage:	Store at -80°C. Avoid repeated freeze-thaw cycles.
Stability:	Stable for 3 months from receipt of products under proper storage and handling conditions.
RefSeq:	<a href="#">NP_000137</a>
RefSeq Size:	889
RefSeq ORF:	525
Synonyms:	LFTD; NBIA3
Locus ID:	2512
UniProt ID:	<a href="#">P02792</a> , <a href="#">A0A384MDR3</a>



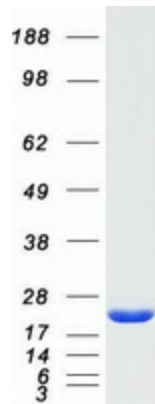
[View online »](#)

**Cytogenetics:** 19q13.33

**Summary:** This gene encodes the light subunit of the ferritin protein. Ferritin is the major intracellular iron storage protein in prokaryotes and eukaryotes. It is composed of 24 subunits of the heavy and light ferritin chains. Variation in ferritin subunit composition may affect the rates of iron uptake and release in different tissues. A major function of ferritin is the storage of iron in a soluble and nontoxic state. Defects in this light chain ferritin gene are associated with several neurodegenerative diseases and hyperferritinemia-cataract syndrome. This gene has multiple pseudogenes. [provided by RefSeq, Jul 2008]

**Protein Families:** Druggable Genome

### Product images:



Coomassie blue staining of purified FTL protein (Cat# [TP303296]). The protein was produced from HEK293T cells transfected with FTL cDNA clone (Cat# [RC203296]) using MegaTran 2.0 (Cat# [TT210002]).