

## Product datasheet for PH303273

### MAD2 (MAD2L1) (NM\_002358) Human Mass Spec Standard

#### Product data:

Product Type:	Mass Spec Standards
Description:	MAD2L1 MS Standard C13 and N15-labeled recombinant protein (NP_002349)
Species:	Human
Expression Host:	HEK293
Expression cDNA Clone or AA Sequence:	RC203273
Predicted MW:	23.5 kDa
Protein Sequence:	<p>&gt;RC203273 protein sequence</p> <p>Red=Cloning site Green=Tags(s)</p> <p>MALQLSREQGITLRGSAEIVAEFFSFGINSILYQRGIYPSETFTRVQKYGLTLLVTTDLLEIKYLNNVVE            QLKDWLYKCSVQKLVVVISNIESGEVLERWQFDIECDKTAKDDSAPREKSQKAIQDEIRSVIRQITATVT            FLPLLEVSCSFDLLIYTDKDLVVPEKWEEGPGQFITNSEEVRLRSFTTTIHKVNSMVAYKIPVND</p> <p>TRTRPLEQKLISEEDLAANDILDYKDDDDKV</p>
Tag:	C-Myc/DDK
Purity:	> 80% as determined by SDS-PAGE and Coomassie blue staining
Concentration:	>0.05 µg/µL as determined by microplate BCA method
Labeling Method:	Labeled with [U- <sup>13</sup> C <sub>6</sub> , <sup>15</sup> N <sub>4</sub> ]-L-Arginine and [U- <sup>13</sup> C <sub>6</sub> , <sup>15</sup> N <sub>2</sub> ]-L-Lysine
Buffer:	25 mM Tris-HCl, 100 mM glycine, pH 7.3
Storage:	Store at -80°C. Avoid repeated freeze-thaw cycles.
Stability:	Stable for 3 months from receipt of products under proper storage and handling conditions.
RefSeq:	<u>NP_002349</u>
RefSeq Size:	1453
RefSeq ORF:	615
Synonyms:	HSMAD2; MAD2
Locus ID:	4085
UniProt ID:	<u>Q13257</u>


[View online »](#)

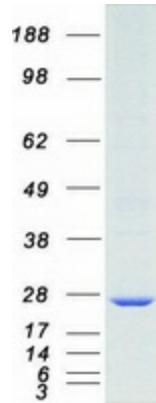
**Cytogenetics:** 4q27

**Summary:** MAD2L1 is a component of the mitotic spindle assembly checkpoint that prevents the onset of anaphase until all chromosomes are properly aligned at the metaphase plate. MAD2L1 is related to the MAD2L2 gene located on chromosome 1. A MAD2 pseudogene has been mapped to chromosome 14. [provided by RefSeq, Jul 2008]

**Protein Families:** Druggable Genome

**Protein Pathways:** Cell cycle, Oocyte meiosis, Progesterone-mediated oocyte maturation

## Product images:



Coomassie blue staining of purified MAD2L1 protein (Cat# [TP303273]). The protein was produced from HEK293T cells transfected with MAD2L1 cDNA clone (Cat# [RC203273]) using MegaTran 2.0 (Cat# [TT210002]).