

Product datasheet for PH303271

RAG1AP1 (SLC50A1) (NM_018845) Human Mass Spec Standard

Product data:

Product Type:	Mass Spec Standards
Description:	RAG1AP1 MS Standard C13 and N15-labeled recombinant protein (NP_061333)
Species:	Human
Expression Host:	HEK293
Expression cDNA Clone or AA Sequence:	RC203271
Predicted MW:	25 kDa
Protein Sequence:	>RC203271 protein sequence Red=Cloning site Green=Tags(s) MEAGGFDSLIIYGACVVFTLGMFSAGLSDLRHRMTRSDNVQFLPFLTTEVNNLGWLSYGALKGDGILII VVNTVGAALQTLYILAYLHYCPKRKRVLLQTATLLGVLLLGYGFWLLVPPEARLQQLGLFCSVFTISM YLSPLADLAKVIQTKSTQCLSYPLTIATLLTSASWCLYGFRLRDPYIMVSNFPGIVTSFIRFWLFWKYPQ EQDRNYWLLQT TRTRPLEQKLI SEEDLAANDILDYKDDDDKV
Tag:	C-Myc/DDK
Purity:	> 80% as determined by SDS-PAGE and Coomassie blue staining
Concentration:	>0.05 µg/µL as determined by microplate BCA method
Labeling Method:	Labeled with [U- 13C6, 15N4]-L-Arginine and [U- 13C6, 15N2]-L-Lysine
Buffer:	25 mM Tris-HCl, 100 mM glycine, pH 7.3
Storage:	Store at -80°C. Avoid repeated freeze-thaw cycles.
Stability:	Stable for 3 months from receipt of products under proper storage and handling conditions.
RefSeq:	NP_061333
RefSeq Size:	1363
RefSeq ORF:	663
Synonyms:	HsSWEET1; RAG1AP1; SCP; slv; SWEET1
Locus ID:	55974
UniProt ID:	Q9BRV3



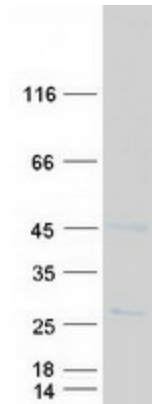
[View online »](#)

Cytogenetics: 1q22

Summary: Mediates sugar transport across membranes. May stimulate V(D)J recombination by the activation of RAG1.[UniProtKB/Swiss-Prot Function]

Protein Families: Transmembrane

Product images:



Coomassie blue staining of purified SLC50A1 protein (Cat# [TP303271]). The protein was produced from HEK293T cells transfected with SLC50A1 cDNA clone (Cat# [RC203271]) using MegaTran 2.0 (Cat# [TT210002]).