

## Product datasheet for PH303262

### SIKE1 (NM\_025073) Human Mass Spec Standard

#### Product data:

Product Type:	Mass Spec Standards
Description:	SIKE1 MS Standard C13 and N15-labeled recombinant protein (NP_079349)
Species:	Human
Expression Host:	HEK293
Expression cDNA Clone or AA Sequence:	RC203262
Predicted MW:	23.7 kDa
Protein Sequence:	>RC203262 protein sequence Red=Cloning site Green=Tags(s)  MSCTIEKILTDAKTLLERLREHDAEAESLVDQSAALHRRVAAMREAGTALPDQYQEDASDMKMSKYKPH ILLSQENTQIRDLQQENRELWISLEEHQDALELIMSKYRKQMLQLMVAKKAVDAEPVLKAHQSHSAEIES QIDRICEMGEVMRKAVQVDDQFCKIQEKLAQLELENKELRELLSISSESLQARKENSMDTASQAIK  TRTRPLEQKLISEEDLAANDILDYKDDDDKV
Tag:	C-Myc/DDK
Purity:	> 80% as determined by SDS-PAGE and Coomassie blue staining
Concentration:	>0.05 µg/µL as determined by microplate BCA method
Labeling Method:	Labeled with [U- <sup>13</sup> C <sub>6</sub> , <sup>15</sup> N <sub>4</sub> ]-L-Arginine and [U- <sup>13</sup> C <sub>6</sub> , <sup>15</sup> N <sub>2</sub> ]-L-Lysine
Buffer:	25 mM Tris-HCl, 100 mM glycine, pH 7.3
Storage:	Store at -80°C. Avoid repeated freeze-thaw cycles.
Stability:	Stable for 3 months from receipt of products under proper storage and handling conditions.
RefSeq:	<a href="#">NP_079349</a>
RefSeq Size:	5507
RefSeq ORF:	621
Synonyms:	SIKE
Locus ID:	80143
UniProt ID:	<a href="#">Q9BRV8</a>



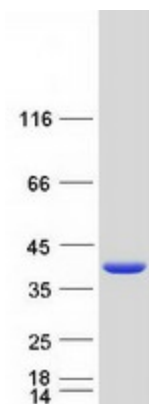
[View online »](#)

**Cytogenetics:** 1p13.2

**Summary:** SIKE interacts with IKK-epsilon (IKBKE; MIM 605048) and TBK1 (MIM 604834) and acts as a suppressor of TLR3 (MIM 603029) and virus-triggered interferon activation pathways (Huang et al., 2005 [PubMed 16281057]).[supplied by OMIM, Mar 2008]

**Protein Pathways:** RIG-I-like receptor signaling pathway

**Product images:**



Coomassie blue staining of purified SIKE1 protein (Cat# [TP303262]). The protein was produced from HEK293T cells transfected with SIKE1 cDNA clone (Cat# [RC203262]) using MegaTran 2.0 (Cat# [TT210002]).