

Product datasheet for PH303252

PSG3 (NM_021016) Human Mass Spec Standard

Product data:

Product Type:	Mass Spec Standards
Description:	PSG3 MS Standard C13 and N15-labeled recombinant protein (NP_066296)
Species:	Human
Expression Host:	HEK293
Expression cDNA Clone or AA Sequence:	RC203252
Predicted MW:	47.9 kDa
Protein Sequence:	>RC203252 protein sequence Red=Cloning site Green=Tags(s)

MGPLSAPPCTQRITWKGLLLTALLLNFWNLPTTAQVTIEAEPTKVSKGKDVLLL VHNLPQNLAGYIWKYK
QMKDLYHYITSYVVDGQIIYGPAYSGRETVYSNASLLIQNVTREDAGSYTLHIVKRGDGRGETGHFTF
TLYLETPKPSISSNLYPREDMEAVSLTCDPETPDASYLWWMNGQSLPMTLSLQLSKNKRTLFLFGVTKY
TAGPYECEIRNPVSASRSDPVTLNLLPKLPKPYITINNLNPRENKDVLAF TCEPKSENYTYIWWLNGQSL
PVSPRVKRPIENRILILPSVTRNETGPYQCEIQDRYGGIRSYPVTLNVL YGPDLPRIYPSFTYYHSGENL
YLSCFADSNPPAEYSWTINGKFQLSGQKLFIPQITTKHSGLYACSVRNSATGMESKSM TVEVSAPSGTG
HLPGLNPL

TRTRPLEQKLI SEEDLAANDILDYKDDDDKV

Tag:	C-Myc/DDK
Purity:	> 80% as determined by SDS-PAGE and Coomassie blue staining
Concentration:	>0.05 µg/µL as determined by microplate BCA method
Labeling Method:	Labeled with [U- ¹³ C ₆ , ¹⁵ N ₄]-L-Arginine and [U- ¹³ C ₆ , ¹⁵ N ₂]-L-Lysine
Buffer:	25 mM Tris-HCl, 100 mM glycine, pH 7.3
Storage:	Store at -80°C. Avoid repeated freeze-thaw cycles.
Stability:	Stable for 3 months from receipt of products under proper storage and handling conditions.
RefSeq:	<u>NP_066296</u>
RefSeq Size:	1922
RefSeq ORF:	1284
Locus ID:	5671



[View online »](#)

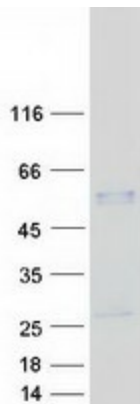
UniProt ID: [Q16557](#)

Cytogenetics: 19q13.2

Summary: The human pregnancy-specific glycoproteins (PSGs) are a family of proteins that are synthesized in large amounts by placental trophoblasts and released into the maternal circulation during pregnancy. Molecular cloning and analysis of several PSG genes has indicated that the PSGs form a subgroup of the carcinoembryonic antigen (CEA) gene family, which belongs to the immunoglobulin superfamily of genes. Members of the CEA family consist of a single N domain, with structural similarity to the immunoglobulin variable domains, followed by a variable number of immunoglobulin constant-like A and/or B domains. Most PSGs have an arg-gly-asp (RGD) motif, which has been shown to function as an adhesion recognition signal for several integrins, in the N-terminal domain (summary by Teglund et al., 1994 [PubMed 7851896]). For additional general information about the PSG gene family, see PSG1 (MIM 176390).[supplied by OMIM, Oct 2009]

Protein Families: Secreted Protein

Product images:



Coomassie blue staining of purified PSG3 protein (Cat# [TP303252]). The protein was produced from HEK293T cells transfected with PSG3 cDNA clone (Cat# [RC203252]) using MegaTran 2.0 (Cat# [TT210002]).