

Product datasheet for PH303250

Phospholipase A2 IIA (PLA2G2A) (NM_000300) Human Mass Spec Standard

Product data:

Product Type:	Mass Spec Standards
Description:	PLA2G2A MS Standard C13 and N15-labeled recombinant protein (NP_000291)
Species:	Human
Expression Host:	HEK293
Expression cDNA Clone or AA Sequence:	RC203250
Predicted MW:	16.1 kDa
Protein Sequence:	>RC203250 protein sequence Red=Cloning site Green=Tags(s) MKTLLLLAVIMIFGLLQAHGNLVNFHRMIKLTGKEAALSYGFYGCHCGVGGRGSPKDATDRCCVTHDCC YKRLKRGCGTKFLSYKFSNSGSRITCAKQDSCRSQLCECDKAAATCFARNKTTYNKKYQYYSNKHCRGS TPRC TRTRPLEQKLISEEDLAANDILDYKDDDDKV
Tag:	C-Myc/DDK
Purity:	> 80% as determined by SDS-PAGE and Coomassie blue staining
Concentration:	>0.05 µg/µL as determined by microplate BCA method
Labeling Method:	Labeled with [U- ¹³ C ₆ , ¹⁵ N ₄]-L-Arginine and [U- ¹³ C ₆ , ¹⁵ N ₂]-L-Lysine
Buffer:	25 mM Tris-HCl, 100 mM glycine, pH 7.3
Storage:	Store at -80°C. Avoid repeated freeze-thaw cycles.
Stability:	Stable for 3 months from receipt of products under proper storage and handling conditions.
RefSeq:	NP_000291
RefSeq Size:	1017
RefSeq ORF:	432
Synonyms:	MOM1; PLA2; PLA2B; PLA2L; PLA2S; PLAS1; sPLA2
Locus ID:	5320
UniProt ID:	P14555 , A0A024RA96



[View online »](#)

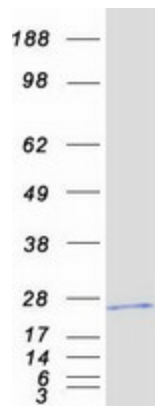
Cytogenetics: 1p36.13

Summary: The protein encoded by this gene is a member of the phospholipase A2 family (PLA2). PLA2s constitute a diverse family of enzymes with respect to sequence, function, localization, and divalent cation requirements. This gene product belongs to group II, which contains secreted form of PLA2, an extracellular enzyme that has a low molecular mass and requires calcium ions for catalysis. It catalyzes the hydrolysis of the sn-2 fatty acid acyl ester bond of phosphoglycerides, releasing free fatty acids and lysophospholipids, and thought to participate in the regulation of the phospholipid metabolism in biomembranes. Several alternatively spliced transcript variants with different 5' UTRs have been found for this gene. [provided by RefSeq, Sep 2009]

Protein Families: Druggable Genome, Transmembrane

Protein Pathways: alpha-Linolenic acid metabolism, Arachidonic acid metabolism, Ether lipid metabolism, Fc epsilon RI signaling pathway, Glycerophospholipid metabolism, GnRH signaling pathway, Linoleic acid metabolism, Long-term depression, MAPK signaling pathway, Metabolic pathways, Vascular smooth muscle contraction, VEGF signaling pathway

Product images:



Coomassie blue staining of purified PLA2G2A protein (Cat# [TP303250]). The protein was produced from HEK293T cells transfected with PLA2G2A cDNA clone (Cat# [RC203250]) using MegaTran 2.0 (Cat# [TT210002]).