

Product datasheet for PH303244

SSX3 (NM_175711) Human Mass Spec Standard

Product data:

Product Type:	Mass Spec Standards
Description:	SSX3 MS Standard C13 and N15-labeled recombinant protein (NP_783642)
Species:	Human
Expression Host:	HEK293
Expression cDNA Clone or AA Sequence:	RC203244
Predicted MW:	19.5 kDa
Protein Sequence:	>RC203244 protein sequence Red=Cloning site Green=Tags(s) MNGDDTFARRPTVGAQIPEKIQKAFDDIAKYFSKEEWEKMKVSEKIVYVYMKRKYEAMTKLGFKAILPSF MRNKRVTFDQGNDFDNDPNRGNQVQRPQMTFGRLQGIFPKIMPKKPAEEGNVSKEVPEASGPQNDGKQLC PPGKPTTSEKINMISGLVLRQYCRFGSRPLQ TRTRPLEQKLISEEDLAANDILDYKDDDDKV
Tag:	C-Myc/DDK
Purity:	> 80% as determined by SDS-PAGE and Coomassie blue staining
Concentration:	>0.05 µg/µL as determined by microplate BCA method
Labeling Method:	Labeled with [U- 13C6, 15N4]-L-Arginine and [U- 13C6, 15N2]-L-Lysine
Buffer:	25 mM Tris-HCl, 100 mM glycine, pH 7.3
Storage:	Store at -80°C. Avoid repeated freeze-thaw cycles.
Stability:	Stable for 3 months from receipt of products under proper storage and handling conditions.
RefSeq:	<u>NP_783642</u>
RefSeq Size:	825
RefSeq ORF:	510
Synonyms:	CT5.3
Locus ID:	10214
UniProt ID:	<u>Q99909</u>



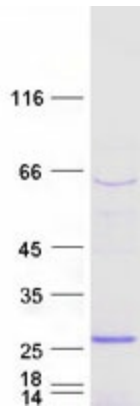
[View online »](#)

Cytogenetics: Xp11.23

Summary: The product of this gene belongs to the family of highly homologous synovial sarcoma X (SSX) breakpoint proteins. These proteins may function as transcriptional repressors. They are also capable of eliciting spontaneous humoral and cellular immune responses in cancer patients, and are potentially useful targets in cancer vaccine-based immunotherapy. While some of the related SSX genes are involved in t(X;18)(p11.2;q11.2) translocations that are characteristically found in all synovial sarcomas, this gene does not appear to be involved in such translocations. [provided by RefSeq, Jul 2013]

Protein Families: Transcription Factors

Product images:



Coomassie blue staining of purified SSX3 protein (Cat# [TP303244]). The protein was produced from HEK293T cells transfected with SSX3 cDNA clone (Cat# [RC203244]) using MegaTran 2.0 (Cat# [TT210002]).