

Product datasheet for PH303232

RBM17 (NM_032905) Human Mass Spec Standard

Product data:

Product Type:	Mass Spec Standards
Description:	RBM17 MS Standard C13 and N15-labeled recombinant protein (NP_116294)
Species:	Human
Expression Host:	HEK293
Expression cDNA Clone or AA Sequence:	RC203232
Predicted MW:	45 kDa
Protein Sequence:	>RC203232 protein sequence Red=Cloning site Green=Tags(s)

MSLYDDLGVETSDSKTEGWSKNFKLLQSQLQVKKAAALTQAKSQRTKQSTVLAPVIDLKRGGSSDDRQIVD
TPPHVAAGLKDPVPSGFSAGEVLIPLADEYDPMFPNDYEKVVKRQREERQRQRELERQKEIEEREKRRKD
RHEASGFARRPDPDSDEDEDYERERRKRSMGGAIIAPPTSLVEKDKEPRDFPYEEDSRPRSQSSKAAIP
PPVYEEQDRPRSPTGPSNSFLANMGGTVAHKIMQKYGFREGQGLGKHEQGLSTALSVEKTSKRGGKIIIVG
DATEKDASKKSDSNPLTEILKCPTKVLLRNVMGAGEVDELEVETKEECEKYGKVGKCVIFEIPGAPDD
EAVRIFLEFERVESAIKAVVDLNGRYFGGRVVKACFYNLDKFRVLDLAEQV

TRTRPLEQKLISEEDLAANDILDYKDDDDKV

Tag:	C-Myc/DDK
Purity:	> 80% as determined by SDS-PAGE and Coomassie blue staining
Concentration:	>0.05 µg/µL as determined by microplate BCA method
Labeling Method:	Labeled with [U- ¹³ C ₆ , ¹⁵ N ₄]-L-Arginine and [U- ¹³ C ₆ , ¹⁵ N ₂]-L-Lysine
Buffer:	25 mM Tris-HCl, 100 mM glycine, pH 7.3
Storage:	Store at -80°C. Avoid repeated freeze-thaw cycles.
Stability:	Stable for 3 months from receipt of products under proper storage and handling conditions.
RefSeq:	<u>NP_116294</u>
RefSeq Size:	3342
RefSeq ORF:	1203
Synonyms:	SPF45
Locus ID:	84991



[View online »](#)

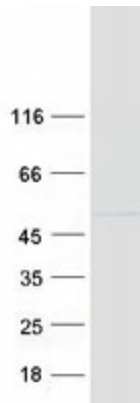
UniProt ID: [Q96I25](#), [Q5W009](#)

Cytogenetics: 10p15.1

Summary: This gene encodes an RNA binding protein. The encoded protein is part of the spliceosome complex and functions in the second catalytic step of mRNA splicing. Alternatively spliced transcript variants have been described. Related pseudogenes exist on chromosomes 9 and 15. [provided by RefSeq, Mar 2009]

Protein Pathways: Spliceosome

Product images:



Coomassie blue staining of purified RBM17 protein (Cat# [TP303232]). The protein was produced from HEK293T cells transfected with RBM17 cDNA clone (Cat# [RC203232]) using MegaTran 2.0 (Cat# [TT210002]).