

## Product datasheet for PH303226

### Inhibin beta A (INHBA) (NM\_002192) Human Mass Spec Standard

#### Product data:

Product Type:	Mass Spec Standards
Description:	INHBA MS Standard C13 and N15-labeled recombinant protein (NP_002183)
Species:	Human
Expression Host:	HEK293
Expression cDNA Clone or AA Sequence:	RC203226
Predicted MW:	47.4 kDa
Protein Sequence:	>RC203226 protein sequence Red=Cloning site Green=Tags(s)

MPLLWLRGFLASCWIIVRSSPTPGSEGHSAAPDCPCALAAALPKDVPNSQPEMVEAVKHHILNMLHLKK  
RPDVTQPVPKAALLNAIRKLHVGVKVGNGYVEIEDDIGRRAEMNELMEQTSEIITFAESGTARKTLHFEI  
SKEGSDLSVVERAEVWFLKVPKANRTRTKVTIRLFQQQKHPQGSLDTGEEAEEVGLKGERSELLSEKV  
VDARKSTWHVFPVSSSIQRLLDQKSSLDVRIACEQCQESGASLVLLGKKKKKEEEGEGKKKGGEGGAG  
ADEEKEQSHRPFLMLQARQSEDHPHRRRRRGLECDGKVNICCKKQFFVSFKDIGWNDWIIAPSGYHANYC  
EGECPSHIAGTSGSSLFHSSTVINHYRMRGHSPFANLKSCCVPTKLRPMSMLYYDDGQNIKKDIQNMIV  
EECGCS

TRTRPLEQKLISEEDLAANDILDYKDDDDKV

Tag:	C-Myc/DDK
Purity:	> 80% as determined by SDS-PAGE and Coomassie blue staining
Concentration:	>0.05 µg/µL as determined by microplate BCA method
Labeling Method:	Labeled with [U- <sup>13</sup> C <sub>6</sub> , <sup>15</sup> N <sub>4</sub> ]-L-Arginine and [U- <sup>13</sup> C <sub>6</sub> , <sup>15</sup> N <sub>2</sub> ]-L-Lysine
Buffer:	25 mM Tris-HCl, 100 mM glycine, pH 7.3
Storage:	Store at -80°C. Avoid repeated freeze-thaw cycles.
Stability:	Stable for 3 months from receipt of products under proper storage and handling conditions.
RefSeq:	<a href="#">NP_002183</a>
RefSeq Size:	2175
RefSeq ORF:	1278
Synonyms:	EDF; FRP



[View online »](#)

Locus ID: 3624

UniProt ID: [P08476](#), [A4D1W7](#)

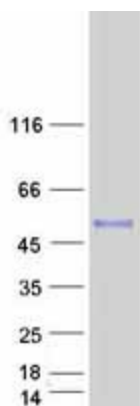
Cytogenetics: 7p14.1

**Summary:** This gene encodes a member of the TGF-beta (transforming growth factor-beta) superfamily of proteins. The encoded preproprotein is proteolytically processed to generate a subunit of the dimeric activin and inhibin protein complexes. These complexes activate and inhibit, respectively, follicle stimulating hormone secretion from the pituitary gland. The encoded protein also plays a role in eye, tooth and testis development. Elevated expression of this gene may be associated with cancer cachexia in human patients. [provided by RefSeq, Aug 2016]

**Protein Families:** Druggable Genome, Secreted Protein

**Protein Pathways:** Cytokine-cytokine receptor interaction, TGF-beta signaling pathway

### Product images:



Coomassie blue staining of purified INHBA protein (Cat# [TP303226]). The protein was produced from HEK293T cells transfected with INHBA cDNA clone (Cat# [RC203226]) using MegaTran 2.0 (Cat# [TT210002]).