

Product datasheet for PH303215

STK25 (NM_006374) Human Mass Spec Standard

Product data:

Product Type:	Mass Spec Standards
Description:	STK25 MS Standard C13 and N15-labeled recombinant protein (NP_006365)
Species:	Human
Expression Host:	HEK293
Expression cDNA Clone or AA Sequence:	RC203215
Predicted MW:	48.1 kDa
Protein Sequence:	>RC203215 protein sequence Red=Cloning site Green=Tags(s)

MAHLRGFANQHSRVDPEELFTKLDRIKGSFGEVYKGDNHTKEVVAIKIIDLEEAEDEIEDIQQEITVL
SQCDSPYITRYFGSYLKSTKLWIIMEYLGGSALDLLKPGPLEETYIATILREILKGLDYLHSEKIHHRD
IKAANVLLSEQGDVKLADFGVAGQLTDTQIKRNTFVGTPFWMAPEVIKQSAYDFKADIWSLGITAIELAK
GEPNNDLHMPRVLFLIPKNSPPTLEGQHSKPFKEFVEACLNKDPFRPTAKELLKHKFITRYTKKTSFL
TELIDRYKRWKSEGHGEESSESDIDGEAEDGEQGPITWTFPPTIRSPHSLKHKGTALHSSQKPAEPVK
RQPRSQCLSTLVRPVFVFGELKEKHKQSGGSVGALEELENAFSLAEEPCPGISDKLMVHLVERVQRFSHNRN
HLTSTR

TRTRPLEQKLI SEEDLAANDILDYKDDDDKV

Tag:	C-Myc/DDK
Purity:	> 80% as determined by SDS-PAGE and Coomassie blue staining
Concentration:	>0.05 µg/µL as determined by microplate BCA method
Labeling Method:	Labeled with [U- ¹³ C ₆ , ¹⁵ N ₄]-L-Arginine and [U- ¹³ C ₆ , ¹⁵ N ₂]-L-Lysine
Buffer:	25 mM Tris-HCl, 100 mM glycine, pH 7.3
Storage:	Store at -80°C. Avoid repeated freeze-thaw cycles.
Stability:	Stable for 3 months from receipt of products under proper storage and handling conditions.
RefSeq:	<u>NP_006365</u>
RefSeq Size:	2527
RefSeq ORF:	1278
Synonyms:	SOK1; YSK1



[View online »](#)

Locus ID: 10494

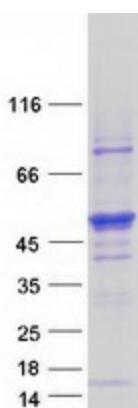
UniProt ID: [O00506](#), [A0A024R4B2](#)

Cytogenetics: 2q37.3

Summary: This gene encodes a member of the germinal centre kinase III (GCK III) subfamily of the sterile 20 superfamily of kinases. The encoded enzyme plays a role in serine-threonine liver kinase B1 (LKB1) signaling pathway to regulate neuronal polarization and morphology of the Golgi apparatus. The protein is translocated from the Golgi apparatus to the nucleus in response to chemical anoxia and plays a role in regulation of cell death. A pseudogene associated with this gene is located on chromosome 18. Multiple alternatively spliced transcript variants have been observed for this gene. [provided by RefSeq, Dec 2012]

Protein Families: Druggable Genome, Protein Kinase

Product images:



Coomassie blue staining of purified STK25 protein (Cat# [TP303215]). The protein was produced from HEK293T cells transfected with STK25 cDNA clone (Cat# [RC203215]) using MegaTran 2.0 (Cat# [TT210002]).