

## Product datasheet for PH303206

### ABHD8 (NM\_024527) Human Mass Spec Standard

#### Product data:

Product Type:	Mass Spec Standards
Description:	ABHD8 MS Standard C13 and N15-labeled recombinant protein (NP_078803)
Species:	Human
Expression Host:	HEK293
Expression cDNA Clone or AA Sequence:	RC203206
Predicted MW:	47.3 kDa
Protein Sequence:	>RC203206 protein sequence Red=Cloning site Green=Tags(s)

MLTGVTDGIFCCLLGTPPNAVGPLESVESSDGYTFVEVKPGRVLRVKHAGPAPAAAPPPSSASSDAAQG  
DL SGLVRCQRRITVYRNGRLLVENLGRAPRADLLHGQNGSGEPPAALEVELADPAGSDGRLAPGSAGSGS  
GSGSGRRRRARRPKRTIHIDCEKRITSCKGAQADVVLFFIHGVGSLAIWKEQLDFVRLGYEVVAPDL  
AGHGASSAPQVAAAYTFYALAEDMRAIFKRYAKKRNVLIGHSYGVSFCTFLAHEYVLDLHVKVIMINGGGP  
TALEPSFCSIFNMPTCVLHCLSPCLAWSFLKAGFARQGAKEKQLLKEGNAFNVSFVLRAMMSGQYWPEG  
DEVYHAELVTPVLLVHGMHDKFVPVEEDQRMAEILLFLKLIDEGSHVMLECPETVNTLLHEFLLWEP  
EPSPKALPEPLPAPPEDKK

TRTRPLEQKLI SEEDLAANDILDYKDDDDKV

Tag:	C-Myc/DDK
Purity:	> 80% as determined by SDS-PAGE and Coomassie blue staining
Concentration:	>0.05 µg/µL as determined by microplate BCA method
Labeling Method:	Labeled with [U- 13C6, 15N4]-L-Arginine and [U- 13C6, 15N2]-L-Lysine
Buffer:	25 mM Tris-HCl, 100 mM glycine, pH 7.3
Storage:	Store at -80°C. Avoid repeated freeze-thaw cycles.
Stability:	Stable for 3 months from receipt of products under proper storage and handling conditions.
RefSeq:	<u>NP_078803</u>
RefSeq Size:	2114
RefSeq ORF:	1317
Locus ID:	79575



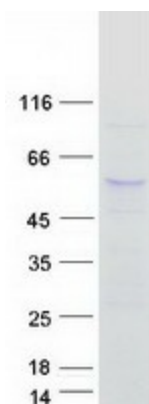
[View online »](#)

UniProt ID: [Q96L13](#), [B2C6G3](#)

Cytogenetics: 19p13.11

Summary: This gene is upstream of, and in a head-to-head orientation with the gene for the mitochondrial ribosomal protein L34. The predicted protein contains alpha/beta hydrolase fold and secretory lipase domains. [provided by RefSeq, Jul 2008]

### Product images:



Coomassie blue staining of purified ABHD8 protein (Cat# [TP303206]). The protein was produced from HEK293T cells transfected with ABHD8 cDNA clone (Cat# [RC203206]) using MegaTran 2.0 (Cat# [TT210002]).