

Product datasheet for PH303180

Cyclophilin B (PPIB) (NM_000942) Human Mass Spec Standard

Product data:

Product Type:	Mass Spec Standards
Description:	PPIB MS Standard C13 and N15-labeled recombinant protein (NP_000933)
Species:	Human
Expression Host:	HEK293
Expression cDNA Clone or AA Sequence:	RC203180
Predicted MW:	23.7 kDa
Protein Sequence:	>RC203180 protein sequence Red=Cloning site Green=Tags(s) MLRLSERNMKVLAAAL IAGSVFFLLLPGPSAADEKKGPKVTVKVYFDLRIGDEDVGRVIFGLFGKTVP KTVDNFVALATGEKGFYKNSKFHRVIKDFMIQGGDFTRGDGTGGKSIYGERFPDENFKLKHYGPGWVSM ANAGKDTNGSQFFITTVKTAWLDGKHVVFGKVLEGMVVRKVESTKTDSRDKPLKDVIIADCGKIEVEKP FAIAKE TRTRPLEQKLI SEEDLAANDILDYKDDDDKV
Tag:	C-Myc/DDK
Purity:	> 80% as determined by SDS-PAGE and Coomassie blue staining
Concentration:	>0.05 µg/µL as determined by microplate BCA method
Labeling Method:	Labeled with [U- 13C6, 15N4]-L-Arginine and [U- 13C6, 15N2]-L-Lysine
Buffer:	25 mM Tris-HCl, 100 mM glycine, pH 7.3
Storage:	Store at -80°C. Avoid repeated freeze-thaw cycles.
Stability:	Stable for 3 months from receipt of products under proper storage and handling conditions.
RefSeq:	NP_000933
RefSeq Size:	1045
RefSeq ORF:	648
Synonyms:	B; CYP-S1; CYPB; HEL-S-39; OI9; SCYLP
Locus ID:	5479
UniProt ID:	P23284



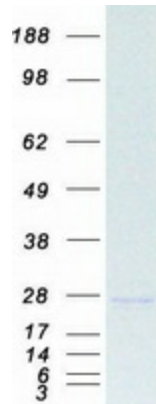
[View online »](#)

Cytogenetics: 15q22.31

Summary: The protein encoded by this gene is a cyclosporine-binding protein and is mainly located within the endoplasmic reticulum. It is associated with the secretory pathway and released in biological fluids. This protein can bind to cells derived from T- and B-lymphocytes, and may regulate cyclosporine A-mediated immunosuppression. Variants have been identified in this protein that give rise to recessive forms of osteogenesis imperfecta. [provided by RefSeq, Oct 2009]

Protein Families: Druggable Genome, Transmembrane

Product images:



Coomassie blue staining of purified PPIB protein (Cat# [TP303180]). The protein was produced from HEK293T cells transfected with PPIB cDNA clone (Cat# [RC203180]) using MegaTran 2.0 (Cat# [TT210002]).