

Product datasheet for PH303169

SEC24C (NM_198597) Human Mass Spec Standard

Product data:

Product Type:	Mass Spec Standards
Description:	SEC24C MS Standard C13 and N15-labeled recombinant protein (NP_940999)
Species:	Human
Expression Host:	HEK293
Expression cDNA Clone or AA Sequence:	RC203169
Predicted MW:	118.3 kDa
Protein Sequence:	>RC203169 protein sequence Red=Cloning site Green=Tags(s)

MNVNQSVPPVPPFGQPQPIYPGYHQSSYGGQSGSTAPAIYPGAYNGPVPVGYQQTTPQGMRSRAPPSSGAPP
ASTAQAPCGAAAYGQFGQGDVQNGPSSTVQMQLPGSQSFGSPLAPVGNQPPVLQPYGPPPTSAQVATQL
SGMQISGAVAPAPPSSGLGFGPPTSLASASGSPNSGLYGSYPQGAPPLSQAQGHPIQTPQRSAPSQA
SSFTPPASGGPRLPSMTGPLLPQSGFSGPSVVSQPNHVSSPPQALPPGTQMTGPLPLPMHSPQQPGYQP
QQNGSFGPARGPQSNYGGPYAAPTFGSQPGPPQPLPPKRLDPDAIPSPIQVIEDDRNRRGTEPFVTGVR
GQVPLVTTNFLVKDQGNASPRYIRCTSYNIPCTSDMAKQAVPLAAVIKPLARLPPEEASPYVVDHGES
GPLRCNRCKAYMCPFMQFIEGRRFQCCFCSCINDVPPQYFQHLDHTGKRVDAYDRPELSLGSYEFLATV
DYCKNNKFPSPPAFIFMIDVSYNAIRTGLVRLCEELKSLLDLFPREGGAEESAIRVGFVTYNKVLHFYN
VKSSLAQPQMMVSDVADMVPLLDGFLVNVNESRAVITSLLDQIPEMFADTRETETVFVPIQAGMEAL
KAAECAGKLFHHTSLPIAEAPGKLNRRDRKLIINTDKEKTLFQPQTGAYQTLAKECVAQGCCVDLFLFP
NQYVDVATLSVVPQLTGGSVYKYASFQVENDQERFLSDLRRDVQKVVGFDAVMRVRTSTGIRAVDFFGAF
YMSNTTDELAVLGDGKTVTVEFKHDDLNEESGALLQCALLYTSCAGQRRRIHNLALNCCTQLADLYR
NCETDTLINYMAKFAYRGLVNSPVKAVRDTLITQCAQILACYRKNCASPSAGQLILPECMKLLPVYVNC
VLKSDVLQPGAETTTDDRAYVRQLVTSMDVTETNVFFYPRLPLTKSPVESTTEPPAVRASEERLNGDI
YLLENLNLFVWGASVQQGVVQSLFVSVFSQITSGLSVLPVLDNPLSKKVRGLIDSLRAQRSRYMKLT
VVKQEDKMEMLFKHFLVEDKSLSGGASYVDFLCHMHKEIRQLLS

TRTRPLEQKLISEEDLAANDILDYKDDDDKV

Tag:	C-Myc/DDK
Purity:	> 80% as determined by SDS-PAGE and Coomassie blue staining
Concentration:	>0.05 µg/µL as determined by microplate BCA method
Labeling Method:	Labeled with [U- ¹³ C ₆ , ¹⁵ N ₄]-L-Arginine and [U- ¹³ C ₆ , ¹⁵ N ₂]-L-Lysine
Buffer:	25 mM Tris-HCl, 100 mM glycine, pH 7.3

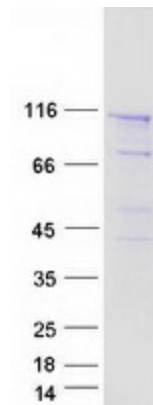


[View online »](#)

Storage:	Store at -80°C. Avoid repeated freeze-thaw cycles.
Stability:	Stable for 3 months from receipt of products under proper storage and handling conditions.
RefSeq:	NP_940999
RefSeq Size:	4476
RefSeq ORF:	3282
Locus ID:	9632
UniProt ID:	P53992 , A0A024QZM6
Cytogenetics:	10q22.2

Summary: The protein encoded by this gene is a member of the SEC24 subfamily of the SEC23/SEC24 family, which is involved in vesicle trafficking. The encoded protein has similarity to yeast Sec24p component of COPII. COPII is the coat protein complex responsible for vesicle budding from the ER. The product of this gene may play a role in shaping the vesicle, as well as in cargo selection and concentration. Alternatively spliced transcript variants encoding the same protein have been identified. [provided by RefSeq, Jul 2008]

Product images:



Coomassie blue staining of purified SEC24C protein (Cat# [TP303169]). The protein was produced from HEK293T cells transfected with SEC24C cDNA clone (Cat# [RC203169]) using MegaTran 2.0 (Cat# [TT210002]).