

## Product datasheet for PH303166

### PDCL (NM\_005388) Human Mass Spec Standard

#### Product data:

Product Type:	Mass Spec Standards
Description:	PDCL MS Standard C13 and N15-labeled recombinant protein (NP_005379)
Species:	Human
Expression Host:	HEK293
Expression cDNA Clone or AA Sequence:	RC203166
Predicted MW:	34.3 kDa
Protein Sequence:	>RC203166 protein sequence Red=Cloning site Green=Tags(s)  MTLDDKLLGEKLQYYYSSSEDESDHEDKDRGRCAPASSVPAEAE LAGEGISVNTGPKGVI NDWRRFK QLETEQREEQCREMERLIK KLSMTCRSHLDEEEEQKQKDLQEKISGKMTLKEFAIMNEDQDDEEFLQYY RKQRMEEMRQQLHKGPQFKQVFEISSGEGFLDMIDKEQKSIIVIMVHIYEDGIPGTEAMNGCMICLAAEYP AVKFCVKVSSVIGASSQFTRNALPALLIYKGGELIGNFVRVTDQLGDDFFAVDLEAFLQEFGLLPEKEVL VLTSVRNSATCHSESDLEID  TRTRPLEQKLI SEEDLAANDILDYKDDDDKV
Tag:	C-Myc/DDK
Purity:	> 80% as determined by SDS-PAGE and Coomassie blue staining
Concentration:	>0.05 µg/µL as determined by microplate BCA method
Labeling Method:	Labeled with [U- <sup>13</sup> C <sub>6</sub> , <sup>15</sup> N <sub>4</sub> ]-L-Arginine and [U- <sup>13</sup> C <sub>6</sub> , <sup>15</sup> N <sub>2</sub> ]-L-Lysine
Buffer:	25 mM Tris-HCl, 100 mM glycine, pH 7.3
Storage:	Store at -80°C. Avoid repeated freeze-thaw cycles.
Stability:	Stable for 3 months from receipt of products under proper storage and handling conditions.
RefSeq:	<u><a href="#">NP_005379</a></u>
RefSeq Size:	3085
RefSeq ORF:	903
Synonyms:	PhLP
Locus ID:	5082



[View online »](#)

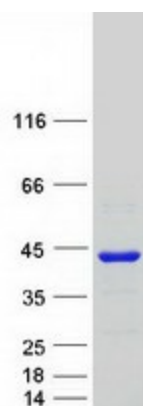
UniProt ID: [Q13371](#)

Cytogenetics: 9q33.2

**Summary:** Phosducin-like protein is a putative modulator of heterotrimeric G proteins. The protein shares extensive amino acid sequence homology with phosducin, a phosphoprotein expressed in retina and pineal gland. Both phosducin-like protein and phosphoducin have been shown to regulate G-protein signaling by binding to the beta-gamma subunits of G proteins. [provided by RefSeq, Jul 2008]

Protein Families: Druggable Genome

### Product images:



Coomassie blue staining of purified PDCL protein (Cat# [TP303166]). The protein was produced from HEK293T cells transfected with PDCL cDNA clone (Cat# [RC203166]) using MegaTran 2.0 (Cat# [TT210002]).