

Product datasheet for PH303164

SCLY (NM_016510) Human Mass Spec Standard

Product data:

Product Type:	Mass Spec Standards
Description:	SCLY MS Standard C13 and N15-labeled recombinant protein (NP_057594)
Species:	Human
Expression Host:	HEK293
Expression cDNA Clone or AA Sequence:	RC203164
Predicted MW:	48.2 kDa
Protein Sequence:	>RC203164 protein sequence Red=Cloning site Green=Tags(s)
	<p>MEAAVAPGRDAPAPAASQPSGCGKHNSPERKVYMDYNATTPLEPEVIQAMTKAMWEAWGNPSSPYSAGRK AKDIINAARESLAKMIGGKPDIIIFTSGGTESNNLVIHSVVKHFHANQTSKGHTGGHSPVKGAKPHFIT SSVEHDSIRLPLEHLVEEQVAAVTFVPVSKVSGQTEVDDILAAVRPTTRLVTIMLANNETGIVMPVPEIS QRIKALNQERVAAGLPPILVHTDAAQALGKQRVDVEDLGVDFLTIVGHKFYGPRI GALYIRGLGEFTPLY PMLFGGGQERNFRPGTENTPMIAGLGKAAELVTQNCEAYEAHMRDVRDYLEERLEAEFGQKRIHLNSQFP GTQRLPNTCNFSIRGPRLQGHVLAQCRVLMASVGAACHSDHGDQPSVLLSYGVFPDVARNALRLSVGR STTRAEVDLVVQDLKQAVAQLEDQA</p> <p>TRTRPLEQKLI SEEDLAANDILDYKDDDDKV</p>
Tag:	C-Myc/DDK
Purity:	> 80% as determined by SDS-PAGE and Coomassie blue staining
Concentration:	>0.05 µg/µL as determined by microplate BCA method
Labeling Method:	Labeled with [U- ¹³ C ₆ , ¹⁵ N ₄]-L-Arginine and [U- ¹³ C ₆ , ¹⁵ N ₂]-L-Lysine
Buffer:	25 mM Tris-HCl, 100 mM glycine, pH 7.3
Storage:	Store at -80°C. Avoid repeated freeze-thaw cycles.
Stability:	Stable for 3 months from receipt of products under proper storage and handling conditions.
RefSeq:	NP_057594
RefSeq Size:	2544
RefSeq ORF:	1335
Synonyms:	hSCL; SCL



[View online »](#)

Locus ID: 51540

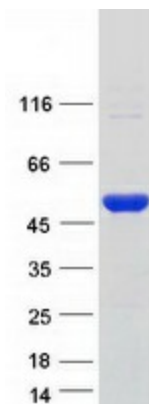
UniProt ID: [Q96115](#), [B4DDP9](#), [A0A0A0MQU4](#), [Q59FK2](#)

Cytogenetics: 2q37.3

Summary: Selenocysteine lyase (SCLY; EC 4.4.1.16) catalyzes the pyridoxal 5-prime phosphate-dependent conversion of L-selenocysteine to L-alanine and elemental selenium (Mihara et al., 2000 [PubMed 10692412]).[supplied by OMIM, Mar 2008]

Protein Pathways: Metabolic pathways, Selenoamino acid metabolism

Product images:



Coomassie blue staining of purified SCLY protein (Cat# [TP303164]). The protein was produced from HEK293T cells transfected with SCLY cDNA clone (Cat# [RC203164]) using MegaTran 2.0 (Cat# [TT210002]).