

Product datasheet for PH303157

NAT8 (NM_003960) Human Mass Spec Standard

Product data:

Product Type:	Mass Spec Standards
Description:	NAT8 MS Standard C13 and N15-labeled recombinant protein (NP_003951)
Species:	Human
Expression Host:	HEK293
Expression cDNA Clone or AA Sequence:	RC203157
Predicted MW:	25.6 kDa
Protein Sequence:	>RC203157 protein sequence Red=Cloning site Green=Tags(s) MAPCHIRKYQESDRQWVVGLLSRGMAEHAPATFRQLLKLPRTLILLGGPLALLLVSGSWLLALVFSISL FPALWFLAKKPWTEYVDMTLCCTDMSDITKSYLSERGSFVVAESEKVVGMVGALPVDDPTLREKRLQLF HLFVDSEHRRQGIKALVRTVLQFARDQGYSEVILDTGTIQLSAMALYQSMGFKKTGQSFFCVWARLVAL HTVHFYIYHLPSSKVGSSQ TRTRPLEQKLI SEEDLAANDILDYKDDDDKV
Tag:	C-Myc/DDK
Purity:	> 80% as determined by SDS-PAGE and Coomassie blue staining
Concentration:	>0.05 µg/µL as determined by microplate BCA method
Labeling Method:	Labeled with [U- ¹³ C ₆ , ¹⁵ N ₄]-L-Arginine and [U- ¹³ C ₆ , ¹⁵ N ₂]-L-Lysine
Buffer:	25 mM Tris-HCl, 100 mM glycine, pH 7.3
Storage:	Store at -80°C. Avoid repeated freeze-thaw cycles.
Stability:	Stable for 3 months from receipt of products under proper storage and handling conditions.
RefSeq:	NP_003951
RefSeq Size:	1073
RefSeq ORF:	681
Synonyms:	ATase2; CCNAT; CML1; GLA; Hcm1; TSC501; TSC510
Locus ID:	9027
UniProt ID:	Q9UHE5



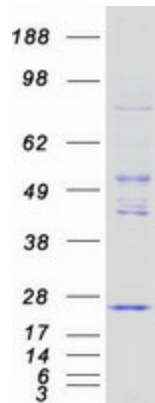
[View online »](#)

Cytogenetics: 2p13.1

Summary: This gene, isolated using the differential display method to detect tissue-specific genes, is specifically expressed in kidney and liver. The encoded protein shows amino acid sequence similarity to N-acetyltransferases. A similar protein in *Xenopus* affects cell adhesion and gastrulation movements, and may be localized in the secretory pathway. A highly similar paralog is found in a cluster with this gene. [provided by RefSeq, Sep 2008]

Protein Families: Transmembrane

Product images:



Coomassie blue staining of purified NAT8 protein (Cat# [TP303157]). The protein was produced from HEK293T cells transfected with NAT8 cDNA clone (Cat# [RC203157]) using MegaTran 2.0 (Cat# [TT210002]).