

## Product datasheet for PH303156

### BBOX1 (NM\_003986) Human Mass Spec Standard

#### Product data:

Product Type:	Mass Spec Standards
Description:	BBOX1 MS Standard C13 and N15-labeled recombinant protein (NP_003977)
Species:	Human
Expression Host:	HEK293
Expression cDNA Clone or AA Sequence:	RC203156
Predicted MW:	44.7 kDa
Protein Sequence:	>RC203156 protein sequence Red=Cloning site Green=Tags(s)
	MACTIQKAEALDGAHLMQILWYDEEESLYPAVWLRDNCPCSDCYLDSAKARKLLVEALDVNIGIKGLIFD RKKVYITWPDEHYSEFQADWLKKRCFSKQARAKLQRELFPECCQYWGSELQLPTLDFEDVLRDEHAYKW LSTLKKVGIIVRLTGASDKPGEVSKLGKRMGFLYLYFYGHTWQVQDKIDANNVAYTTGKLSFHTDYPALHH PPGVQLLHCIKQTVTGGDSEIVDGFNVCQKLKKNPQAFQILSSTFVDFTDIGVDYCDFSVQSKHKIIEI DDKGQVVRINFNNATRDITFDVPPERVQPFYAALKEFVDLMNSKESKFTFKMNPGDVITFDNWRLLHGRR SYEAGTEISRHLEGAYADWDVMSRLRILRQVENG
	TRTRPLEQKLISEEDLAANDILDYKDDDDKV
Tag:	C-Myc/DDK
Purity:	> 80% as determined by SDS-PAGE and Coomassie blue staining
Concentration:	>0.05 µg/µL as determined by microplate BCA method
Labeling Method:	Labeled with [U- <sup>13</sup> C <sub>6</sub> , <sup>15</sup> N <sub>4</sub> ]-L-Arginine and [U- <sup>13</sup> C <sub>6</sub> , <sup>15</sup> N <sub>2</sub> ]-L-Lysine
Buffer:	25 mM Tris-HCl, 100 mM glycine, pH 7.3
Storage:	Store at -80°C. Avoid repeated freeze-thaw cycles.
Stability:	Stable for 3 months from receipt of products under proper storage and handling conditions.
RefSeq:	<a href="#">NP_003977</a>
RefSeq Size:	1901
RefSeq ORF:	1161
Synonyms:	BBH; BBOX; G-BBH; gamma-BBH
Locus ID:	8424



[View online »](#)

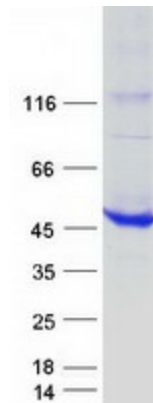
UniProt ID: [O75936](#)

Cytogenetics: 11p14.2

Summary: This gene encodes gamma butyrobetaine hydroxylase which catalyzes the formation of L-carnitine from gamma-butyrobetaine, the last step in the L-carnitine biosynthetic pathway. Carnitine is essential for the transport of activated fatty acids across the mitochondrial membrane during mitochondrial beta-oxidation. [provided by RefSeq, Jul 2008]

Protein Pathways: Lysine degradation

### Product images:



Coomassie blue staining of purified BBOX1 protein (Cat# [TP303156]). The protein was produced from HEK293T cells transfected with BBOX1 cDNA clone (Cat# [RC203156]) using MegaTran 2.0 (Cat# [TT210002]).