

Product datasheet for PH303152

trfp (MED20) (NM_004275) Human Mass Spec Standard

Product data:

Product Type:	Mass Spec Standards
Description:	MED20 MS Standard C13 and N15-labeled recombinant protein (NP_004266)
Species:	Human
Expression Host:	HEK293
Expression cDNA Clone or AA Sequence:	RC203152
Predicted MW:	23.2 kDa
Protein Sequence:	>RC203152 protein sequence Red=Cloning site Green=Tags(s) MGVTCVSVQMPVAEGKSVQQTVELLTRKLEMLGAEKQGTFCVDCETYHTAASTLGSQGQTGKLMYVMHNSE YPLSCFALFENGPLIADTNFDVLMVKLKGFFQSAKASKIETRGTRYQYCDFLVKVGTVTMGPSARGISV EVEYGPCVVASDCWSLLLEFLQSFLLGSHTPGAPAVFGNRHDAVYGPADTMVQYMELFNKIRKQQQVPVAG IR TRTRPLEQKLI SEEDLAANDILDYKDDDDKV
Tag:	C-Myc/DDK
Purity:	> 80% as determined by SDS-PAGE and Coomassie blue staining
Concentration:	>0.05 µg/µL as determined by microplate BCA method
Labeling Method:	Labeled with [U- ¹³ C ₆ , ¹⁵ N ₄]-L-Arginine and [U- ¹³ C ₆ , ¹⁵ N ₂]-L-Lysine
Buffer:	25 mM Tris-HCl, 100 mM glycine, pH 7.3
Storage:	Store at -80°C. Avoid repeated freeze-thaw cycles.
Stability:	Stable for 3 months from receipt of products under proper storage and handling conditions.
RefSeq:	NP_004266
RefSeq Size:	2478
RefSeq ORF:	636
Synonyms:	PRO0213; SRB2; TRFP
Locus ID:	9477
UniProt ID:	Q9H944

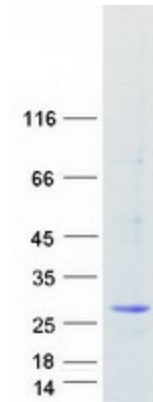


[View online »](#)

Cytogenetics: 6p21.1

Summary: This gene encodes a component of the mediator complex (also known as TRAP, SMCC, DRIP, or ARC), a transcriptional coactivator complex thought to be required for the expression of almost all genes. The mediator complex is recruited by transcriptional activators or nuclear receptors to induce gene expression, by interacting with RNA polymerase II and promoting the formation of a transcriptional pre-initiation complex. A mutation in this gene has been associated with a novel infantile-onset neurodegenerative movement disorder. Alternatively spliced transcript variants have been identified. [provided by RefSeq, Mar 2015]

Product images:



Coomassie blue staining of purified MED20 protein (Cat# [TP303152]). The protein was produced from HEK293T cells transfected with MED20 cDNA clone (Cat# [RC203152]) using MegaTran 2.0 (Cat# [TT210002]).