

Product datasheet for PH303148

BHMT (NM_001713) Human Mass Spec Standard

Product data:

Product Type:	Mass Spec Standards
Description:	BHMT MS Standard C13 and N15-labeled recombinant protein (NP_001704)
Species:	Human
Expression Host:	HEK293
Expression cDNA Clone or AA Sequence:	RC203148
Predicted MW:	45 kDa
Protein Sequence:	>RC203148 protein sequence Red=Cloning site Green=Tags(s)

MPPVGGKKAKKGILERLNAGEIVIGDGGFVFALEKRGYVKAGPWTPEAAVEHPEAVRQLHREFLRAGSNV
MQTFTFYASEDKLENRGNVLEKISGQEVNEAACDIARQVADEGDALVAGVVSQTPSYLSCKSETEVKKV
FLQQLEVMKKNVDFLIAEYFEHVVEAVWAVETLIASGKPVAAATMCIGPEGDLHGVPPEGCAVRLVKAGA
SIIGVNCHFDPTISLKTVKLMKEGLEAARLKAHLMSQPLAYHTPCNKQGFIDLPEFPFGLPEPRVATRWD
IQKYAREAYNLGVRYIGGCCGFEPYHIRAIAEELAPERGFPPASEKHGWSGGLDMHTKPWVRARARKE
YWENLRIASGRPYNPSMSKPDGWTGTAELMQQKEATTEQQLKELFEKQKFKSQ

TRTRPLEQKLI SEEDLAANDILDYKDDDDKV

Tag:	C-Myc/DDK
Purity:	> 80% as determined by SDS-PAGE and Coomassie blue staining
Concentration:	>0.05 µg/µL as determined by microplate BCA method
Labeling Method:	Labeled with [U- ¹³ C ₆ , ¹⁵ N ₄]-L-Arginine and [U- ¹³ C ₆ , ¹⁵ N ₂]-L-Lysine
Buffer:	25 mM Tris-HCl, 100 mM glycine, pH 7.3
Storage:	Store at -80°C. Avoid repeated freeze-thaw cycles.
Stability:	Stable for 3 months from receipt of products under proper storage and handling conditions.
RefSeq:	<u>NP_001704</u>
RefSeq Size:	2515
RefSeq ORF:	1218
Synonyms:	BHMT1; HEL-S-61p
Locus ID:	635



[View online »](#)

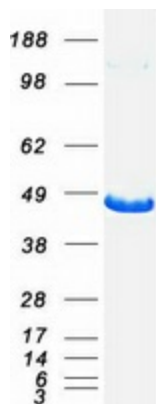
UniProt ID: [Q93088](#), [V9HWA4](#)

Cytogenetics: 5q14.1

Summary: This gene encodes a cytosolic enzyme that catalyzes the conversion of betaine and homocysteine to dimethylglycine and methionine, respectively. Defects in this gene could lead to hyperhomocyst(e)inemia, but such a defect has not yet been observed. [provided by RefSeq, Jul 2008]

Protein Pathways: Cysteine and methionine metabolism, Glycine, serine and threonine metabolism, Metabolic pathways

Product images:



Coomassie blue staining of purified BHMT protein (Cat# [TP303148]). The protein was produced from HEK293T cells transfected with BHMT cDNA clone (Cat# [RC203148]) using MegaTran 2.0 (Cat# [TT210002]).