

## Product datasheet for PH303141

### IP10 (CXCL10) (NM\_001565) Human Mass Spec Standard

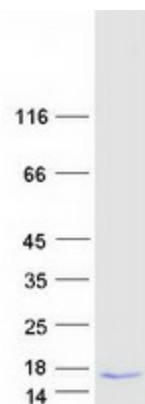
#### Product data:

Product Type:	Mass Spec Standards
Description:	CXCL10 MS Standard C13 and N15-labeled recombinant protein (NP_001556)
Species:	Human
Expression Host:	HEK293
Expression cDNA Clone or AA Sequence:	RC203141
Predicted MW:	10.9 kDa
Protein Sequence:	>RC203141 protein sequence Red=Cloning site Green=Tags(s)  MNQTAILICCLIFLTLSGIQGVPLSRTVRCISISNQPVNPRSLEKLEIIPASQFCPRVEIIATMKKKG EKRCLNPESKAIKNLLKAVSKERSKRSP  TRTRPLEQKLISEEDLAANDILDYKDDDDKV
Tag:	C-Myc/DDK
Purity:	> 80% as determined by SDS-PAGE and Coomassie blue staining
Concentration:	50 ug/ml as determined by BCA
Labeling Method:	Labeled with [U- <sup>13</sup> C <sub>6</sub> , <sup>15</sup> N <sub>4</sub> ]-L-Arginine and [U- <sup>13</sup> C <sub>6</sub> , <sup>15</sup> N <sub>2</sub> ]-L-Lysine
Buffer:	100 mM glycine, 25 mM Tris-HCl, pH 7.3. Store at -80°C. Avoid repeated freeze-thaw cycles. Stable for 3 months from receipt of products under proper storage and handling conditions.
RefSeq:	<u>NP_001556</u>
RefSeq Size:	1227
RefSeq ORF:	294
Synonyms:	C7; crg-2; gIP-10; IFI10; INP10; IP-10; mob-1; SCYB10
Locus ID:	3627
Cytogenetics:	4q21.1



[View online »](#)

- Summary:** This antimicrobial gene encodes a chemokine of the CXC subfamily and ligand for the receptor CXCR3. Binding of this protein to CXCR3 results in pleiotropic effects, including stimulation of monocytes, natural killer and T-cell migration, and modulation of adhesion molecule expression. [provided by RefSeq, Sep 2014]
- Protein Families:** Druggable Genome, Secreted Protein, Transmembrane
- Protein Pathways:** Chemokine signaling pathway, Cytokine-cytokine receptor interaction, Cytosolic DNA-sensing pathway, RIG-I-like receptor signaling pathway, Toll-like receptor signaling pathway

**Product images:**

Coomassie blue staining of purified CXCL10 protein (Cat# [TP303141]). The protein was produced from HEK293T cells transfected with CXCL10 cDNA clone (Cat# [RC203141]) using MegaTran 2.0 (Cat# [TT210002]).