

Product datasheet for PH303130

SR1 (SRI) (NM_003130) Human Mass Spec Standard

Product data:

Product Type:	Mass Spec Standards
Description:	SRI MS Standard C13 and N15-labeled recombinant protein (NP_003121)
Species:	Human
Expression Host:	HEK293
Expression cDNA Clone or AA Sequence:	RC203130
Predicted MW:	21.7 kDa
Protein Sequence:	>RC203130 protein sequence Red=Cloning site Green=Tags(s) MAYPGHPGAGGGYYPGGYGGAPGGPAFPGQTQDPLYGYFAAVAGQDQGQIDADELQRCLTQSGIAGGYKPF NLETCLMVSMLDRDMSGTMGFNEFKELWAVLNGWRQHFISFDTDRSGTVDPQELQKALTTMGFRLSPQA VNSIAKRYSTNGKITFDDYIACCVKLRALTDSFRRRDTAQQGVVNFYDDFIQCVMSV TRTRPLEQKLISEEDLAANDILDYKDDDDKV
Tag:	C-Myc/DDK
Purity:	> 80% as determined by SDS-PAGE and Coomassie blue staining
Concentration:	>0.05 µg/µL as determined by microplate BCA method
Labeling Method:	Labeled with [U- ¹³ C ₆ , ¹⁵ N ₄]-L-Arginine and [U- ¹³ C ₆ , ¹⁵ N ₂]-L-Lysine
Buffer:	25 mM Tris-HCl, 100 mM glycine, pH 7.3
Storage:	Store at -80°C. Avoid repeated freeze-thaw cycles.
Stability:	Stable for 3 months from receipt of products under proper storage and handling conditions.
RefSeq:	NP_003121
RefSeq Size:	2036
RefSeq ORF:	594
Synonyms:	CP-22; CP22; SCN; V19
Locus ID:	6717
UniProt ID:	P30626 , B4DHO6



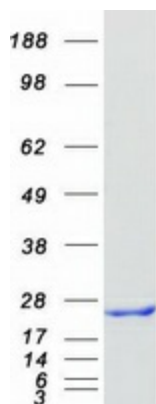
[View online »](#)

Cytogenetics: 7q21.12

Summary: This gene encodes a calcium-binding protein with multiple E-F hand domains that relocates from the cytoplasm to the sarcoplasmic reticulum in response to elevated calcium levels. In addition to regulating intracellular calcium homeostasis it also modulates excitation-contraction coupling in the heart. Alternative splicing results in multiple transcript variants encoding distinct proteins. Multiple pseudogenes exist for this gene. [provided by RefSeq, Mar 2012]

Protein Families: Druggable Genome

Product images:



Coomassie blue staining of purified SRI protein (Cat# [TP303130]). The protein was produced from HEK293T cells transfected with SRI cDNA clone (Cat# [RC203130]) using MegaTran 2.0 (Cat# [TT210002]).