

## Product datasheet for PH303122

### Myosin light chain 3 (MYL3) (NM\_000258) Human Mass Spec Standard

#### Product data:

Product Type:	Mass Spec Standards
Description:	MYL3 MS Standard C13 and N15-labeled recombinant protein (NP_000249)
Species:	Human
Expression Host:	HEK293
Expression cDNA Clone or AA Sequence:	RC203122
Predicted MW:	21.9 kDa
Protein Sequence:	>RC203122 protein sequence Red=Cloning site Green=Tags(s)  MAPKKPEPKKDDAKAAPKAAPAPAPPPPEPERPKEVEFDASKIKIEFTPEQIEEFKEAFMLFDRTPKCEMK ITYGQCGDVLRALGQNPTQAEVLRVLGKPRQEELNTKMMDFETFLPMLQHI SKNKDTGT YEDFVEGLRVF DKEGNGTVMGAELRHVLATLGERLTEDEVEKLMAGQEDSNGCINYEAFVKHIMSS  TRTRPLEQKLISEEDLAANDILDYKDDDDKV
Tag:	C-Myc/DDK
Purity:	> 80% as determined by SDS-PAGE and Coomassie blue staining
Concentration:	>0.05 µg/µL as determined by microplate BCA method
Labeling Method:	Labeled with [U- 13C6, 15N4]-L-Arginine and [U- 13C6, 15N2]-L-Lysine
Buffer:	25 mM Tris-HCl, 100 mM glycine, pH 7.3
Storage:	Store at -80°C. Avoid repeated freeze-thaw cycles.
Stability:	Stable for 3 months from receipt of products under proper storage and handling conditions.
RefSeq:	<a href="#">NP_000249</a>
RefSeq Size:	942
RefSeq ORF:	585
Synonyms:	CMH8; MLC-IV/sb; MLC1SB; MLC1V; VLC1; VLCI
Locus ID:	4634
UniProt ID:	<a href="#">P08590</a> , <a href="#">A0A024R2Q5</a>



[View online »](#)

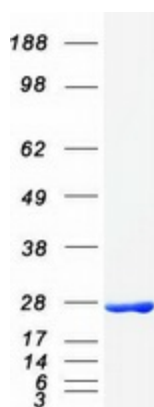
**Cytogenetics:** 3p21.31

**Summary:** MYL3 encodes myosin light chain 3, an alkali light chain also referred to in the literature as both the ventricular isoform and the slow skeletal muscle isoform. Mutations in MYL3 have been identified as a cause of mid-left ventricular chamber type hypertrophic cardiomyopathy. [provided by RefSeq, Jul 2008]

**Protein Families:** Druggable Genome

**Protein Pathways:** Cardiac muscle contraction, Dilated cardiomyopathy, Hypertrophic cardiomyopathy (HCM)

### Product images:



Coomassie blue staining of purified MYL3 protein (Cat# [TP303122]). The protein was produced from HEK293T cells transfected with MYL3 cDNA clone (Cat# [RC203122]) using MegaTran 2.0 (Cat# [TT210002]).