

Product datasheet for PH303088

RPL35 (NM_007209) Human Mass Spec Standard

Product data:

Product Type:	Mass Spec Standards
Description:	RPL35 MS Standard C13 and N15-labeled recombinant protein (NP_009140)
Species:	Human
Expression Host:	HEK293
Expression cDNA Clone or AA Sequence:	RC203088
Predicted MW:	14.6 kDa
Protein Sequence:	>RC203088 protein sequence Red =Cloning site Green =Tags(s) MAKIKARDLRGKKKEELLKQLDDLKVELSQLRVAKVTGGAASKLSKIRVVRKSIARVLTVINQTQKENLR KFYKGGKYPKPLDLRPPKTRAMRRRLNKHEENLTKKQQRKERLYPLRKYAVRA TRTRPLEQKLISEEDLAANDILDYKDDDDKV
Tag:	C-Myc/DDK
Purity:	> 80% as determined by SDS-PAGE and Coomassie blue staining
Concentration:	>0.05 µg/µL as determined by microplate BCA method
Labeling Method:	Labeled with [U- 13C6, 15N4]-L-Arginine and [U- 13C6, 15N2]-L-Lysine
Buffer:	25 mM Tris-HCl, 100 mM glycine, pH 7.3
Storage:	Store at -80°C. Avoid repeated freeze-thaw cycles.
Stability:	Stable for 3 months from receipt of products under proper storage and handling conditions.
RefSeq:	NP_009140
RefSeq Size:	475
RefSeq ORF:	369
Synonyms:	DBA19; L35
Locus ID:	11224
UniProt ID:	P42766
Cytogenetics:	9q33.3



[View online »](#)

Summary:

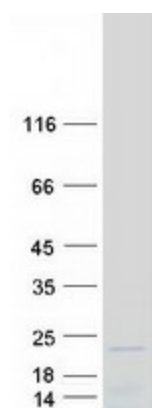
Ribosomes, the organelles that catalyze protein synthesis, consist of a small 40S subunit and a large 60S subunit. Together these subunits are composed of 4 RNA species and approximately 80 structurally distinct proteins. This gene encodes a ribosomal protein that is a component of the 60S subunit. The protein belongs to the L29P family of ribosomal proteins. It is located in the cytoplasm. As is typical for genes encoding ribosomal proteins, there are multiple processed pseudogenes of this gene dispersed through the genome. [provided by RefSeq, Jul 2008]

Protein Families:

Druggable Genome

Protein Pathways:

Ribosome

Product images:

Coomassie blue staining of purified RPL35 protein (Cat# [TP303088]). The protein was produced from HEK293T cells transfected with RPL35 cDNA clone (Cat# [RC203088]) using MegaTran 2.0 (Cat# [TT210002]).