

Product datasheet for PH303081

fast skeletal Myosin (MYLPF) (NM_013292) Human Mass Spec Standard

Product data:

Product Type:	Mass Spec Standards
Description:	MYLPF MS Standard C13 and N15-labeled recombinant protein (NP_037424)
Species:	Human
Expression Host:	HEK293
Expression cDNA Clone or AA Sequence:	RC203081
Predicted MW:	19 kDa
Protein Sequence:	>RC203081 protein sequence Red=Cloning site Green=Tags(s) MAPKRAKRRRTVEGGSSSVFSMFDTQTQIQEFKEAFTVIDQNRDGIIDKEDLRDTFAAMGRLNVKNEELDAM MKEASGPINFTVFLTMFGEKLGADPEDVITGAFKVLDPPEGKGTIKKKFLEELLTTQCDRFSQEEIKNMW AAFPPDVGGNVYKNICYVITHGDAKDQE TRTRPLEQKLI SEEDLAANDILDYKDDDDKV
Tag:	C-Myc/DDK
Purity:	> 80% as determined by SDS-PAGE and Coomassie blue staining
Concentration:	>0.05 µg/µL as determined by microplate BCA method
Labeling Method:	Labeled with [U- 13C6, 15N4]-L-Arginine and [U- 13C6, 15N2]-L-Lysine
Buffer:	25 mM Tris-HCl, 100 mM glycine, pH 7.3
Storage:	Store at -80°C. Avoid repeated freeze-thaw cycles.
Stability:	Stable for 3 months from receipt of products under proper storage and handling conditions.
RefSeq:	NP_037424
RefSeq Size:	683
RefSeq ORF:	507
Synonyms:	HUMMLC2B; MLC2B; MRLC2; MYL11
Locus ID:	29895
UniProt ID:	Q96A32 , A0A024QZG6

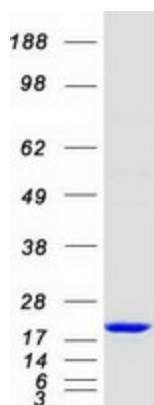


[View online »](#)

Cytogenetics: 16p11.2

Protein Pathways: Focal adhesion, Leukocyte transendothelial migration, Regulation of actin cytoskeleton, Tight junction

Product images:



Coomassie blue staining of purified MYLPF protein (Cat# [TP303081]). The protein was produced from HEK293T cells transfected with MYLPF cDNA clone (Cat# [RC203081]) using MegaTran 2.0 (Cat# [TT210002]).