

Product datasheet for PH303050

COMMD9 (NM_014186) Human Mass Spec Standard

Product data:

Product Type:	Mass Spec Standards
Description:	COMMD9 MS Standard C13 and N15-labeled recombinant protein (NP_054905)
Species:	Human
Expression Host:	HEK293
Expression cDNA Clone or AA Sequence:	RC203050
Predicted MW:	21.8 kDa
Protein Sequence:	>RC203050 protein sequence Red=Cloning site Green=Tags(s) MAALTAEHFAALQSLKASSKDVVRQLCQESFSSSALGLKLLDVTCSLSVTQEEAEELLQALHRLTRL VAFRDLSSAEAILALFPENFHQNLKNLLTKIILEHVSTWRTEAQANQISLPRLVDLDWRVDIKTSSDSIS RMAVPTCLLQMKIQEDPSLGGDKPSISAVTVELSKETLDTMLDGLGRIRDQLSAVASK TRTRPLEQKLISEEDLAANDILDYKDDDDKV
Tag:	C-Myc/DDK
Purity:	> 80% as determined by SDS-PAGE and Coomassie blue staining
Concentration:	>0.05 µg/µL as determined by microplate BCA method
Labeling Method:	Labeled with [U- 13C6, 15N4]-L-Arginine and [U- 13C6, 15N2]-L-Lysine
Buffer:	25 mM Tris-HCl, 100 mM glycine, pH 7.3
Storage:	Store at -80°C. Avoid repeated freeze-thaw cycles.
Stability:	Stable for 3 months from receipt of products under proper storage and handling conditions.
RefSeq:	NP_054905
RefSeq Size:	3006
RefSeq ORF:	594
Synonyms:	C11orf55; HSPC166; LINC00610
Locus ID:	29099
UniProt ID:	Q9P000 , Q53FR9

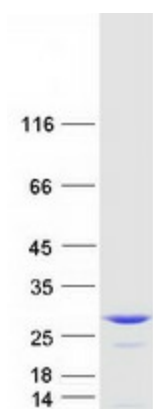


[View online »](#)

Cytogenetics: 11p13

Summary: May modulate activity of cullin-RING E3 ubiquitin ligase (CRL) complexes (PubMed:21778237). May down-regulate activation of NF-kappa-B (PubMed:15799966). Modulates Na(+) transport in epithelial cells by regulation of apical cell surface expression of amiloride-sensitive sodium channel (ENaC) subunits (PubMed:23637203).[UniProtKB/Swiss-Prot Function]

Product images:



Coomassie blue staining of purified COMMD9 protein (Cat# [TP303050]). The protein was produced from HEK293T cells transfected with COMMD9 cDNA clone (Cat# [RC203050]) using MegaTran 2.0 (Cat# [TT210002]).