

Product datasheet for PH303046

DERL2 (NM_016041) Human Mass Spec Standard

Product data:

Product Type:	Mass Spec Standards
Description:	DERL2 MS Standard C13 and N15-labeled recombinant protein (NP_057125)
Species:	Human
Expression Host:	HEK293
Expression cDNA Clone or AA Sequence:	RC203046
Predicted MW:	27.6 kDa
Protein Sequence:	<p>>RC203046 protein sequence</p> <p>Red=Cloning site Green=Tags(s)</p> <p>MAYQSLRLEYLQIPPVSRAYTTACVLTTAAVQLELITPFQLYFNPELIFKHFQIWRITNLF FGPVGFN FLFNMIFLYRYCRMLEEGSFRGRTADFVFMFLFGGFLMTLFGFLVSLVFLGQAFTIMLVYVWSRRNPYVR MNFFGLLNFQAPFLPWLMGFSLLLGNIIIVDLLGIAVGHIYFFLEDVFPNQGGIRILKTPSILKAIFD TPDEDPNYNPLPEERPGGFAWGEGQRLGG</p> <p>TRTRPLEQKLISEEDLAANDILDYKDDDDKV</p>
Tag:	C-Myc/DDK
Purity:	> 80% as determined by SDS-PAGE and Coomassie blue staining
Concentration:	>0.05 µg/µL as determined by microplate BCA method
Labeling Method:	Labeled with [U- ¹³ C ₆ , ¹⁵ N ₄]-L-Arginine and [U- ¹³ C ₆ , ¹⁵ N ₂]-L-Lysine
Buffer:	25 mM Tris-HCl, 100 mM glycine, pH 7.3
Storage:	Store at -80°C. Avoid repeated freeze-thaw cycles.
Stability:	Stable for 3 months from receipt of products under proper storage and handling conditions.
RefSeq:	NP_057125
RefSeq Size:	1156
RefSeq ORF:	717
Synonyms:	CGI-101; derlin-2; DERtrin-2; F-LAN-1; F-LANa; FLANa
Locus ID:	51009
UniProt ID:	Q9GZP9

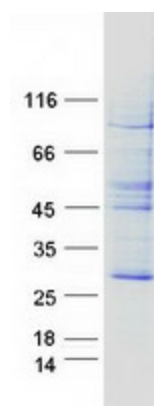

[View online »](#)

Cytogenetics: 17p13.2

Summary: Proteins that are unfolded or misfolded in the endoplasmic reticulum (ER) must be refolded or degraded to maintain the homeostasis of the ER. DERL2 is involved in the degradation of misfolded glycoproteins in the ER (Oda et al., 2006 [PubMed 16449189]).[supplied by OMIM, Mar 2008]

Protein Families: Transmembrane

Product images:



Coomassie blue staining of purified DERL2 protein (Cat# [TP303046]). The protein was produced from HEK293T cells transfected with DERL2 cDNA clone (Cat# [RC203046]) using MegaTran 2.0 (Cat# [TT210002]).