

## Product datasheet for PH303035

### S100A4 (NM\_002961) Human Mass Spec Standard

#### Product data:

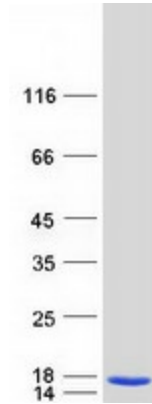
Product Type:	Mass Spec Standards
Description:	S100A4 MS Standard C13 and N15-labeled recombinant protein (NP_002952)
Species:	Human
Expression Host:	HEK293
Expression cDNA Clone or AA Sequence:	RC203035
Predicted MW:	11.7 kDa
Protein Sequence:	>RC203035 protein sequence <b>Red</b> =Cloning site <b>Green</b> =Tags(s)  MACPLEKALDVMVSTFHKYSGKEGDKFKLNKSELKELLTRELPSFLGKRTDEAAFQKLMSNLDNDRNEV DFQEYCVFLSCIAMMCNEFFEGFPDKQPRKK  <b>TR</b> TRPLEQKLISEEDLAANDILDYKDDDDKV
Tag:	C-Myc/DDK
Purity:	> 80% as determined by SDS-PAGE and Coomassie blue staining
Concentration:	>0.05 µg/µL as determined by microplate BCA method
Labeling Method:	Labeled with [U- 13C6, 15N4]-L-Arginine and [U- 13C6, 15N2]-L-Lysine
Buffer:	25 mM Tris-HCl, 100 mM glycine, pH 7.3
Storage:	Store at -80°C. Avoid repeated freeze-thaw cycles.
Stability:	Stable for 3 months from receipt of products under proper storage and handling conditions.
RefSeq:	<a href="#">NP_002952</a>
RefSeq Size:	512
RefSeq ORF:	303
Synonyms:	18A2; 42A; CAPL; FSP1; MTS1; P9KA; PEL98
Locus ID:	6275
UniProt ID:	<a href="#">P26447</a>
Cytogenetics:	1q21.3



[View online »](#)

**Summary:**

The protein encoded by this gene is a member of the S100 family of proteins containing 2 EF-hand calcium-binding motifs. S100 proteins are localized in the cytoplasm and/or nucleus of a wide range of cells, and involved in the regulation of a number of cellular processes such as cell cycle progression and differentiation. S100 genes include at least 13 members which are located as a cluster on chromosome 1q21. This protein may function in motility, invasion, and tubulin polymerization. Chromosomal rearrangements and altered expression of this gene have been implicated in tumor metastasis. Multiple alternatively spliced variants, encoding the same protein, have been identified. [provided by RefSeq, Jul 2008]

**Product images:**

Coomassie blue staining of purified S100A4 protein (Cat# [TP303035]). The protein was produced from HEK293T cells transfected with S100A4 cDNA clone (Cat# [RC203035]) using MegaTran 2.0 (Cat# [TT210002]).