

Product datasheet for PH303022

Methionyl Aminopeptidase 1 (METAP1) (NM_015143) Human Mass Spec Standard

Product data:

Product Type:	Mass Spec Standards
Description:	METAP1 MS Standard C13 and N15-labeled recombinant protein (NP_055958)
Species:	Human
Expression Host:	HEK293
Expression cDNA Clone or AA Sequence:	RC203022
Predicted MW:	30.37 kDa
Protein Sequence:	>RC203022 representing NM_015143 Red =Cloning site Green =Tags(s) MSESEQALKGTSQIKLLSSEIDIEGMRLVCRLAREVLDVAAGMIKPGVTTEEIDHAVHLACIARNCYPSPL NYYNFPKSCCTS VNEVICHGIPDRRPLQEGDIVNVDITLYRNGYHGDNLNETFFVGEVDDGARKLVQTTYE CLMQAIDAVKPGVRYRELGNIIQKHAQANGFSVRSYCGHGIHKL FHTAPNVPHYAKNKAVGVMKSGHVF TIEPMICEGGWQDET WPDGWTAVTRDGKRS AQFEHTLLVTD TGCEILTRRLDSARPHFMSQF TR TRPLEQKLI SEEDLAANDILDYKDDDDKV
Tag:	C-Myc/DDK
Purity:	> 80% as determined by SDS-PAGE and Coomassie blue staining
Concentration:	>0.05 µg/µL as determined by microplate BCA method
Labeling Method:	Labeled with [U- ¹³ C ₆ , ¹⁵ N ₄]-L-Arginine and [U- ¹³ C ₆ , ¹⁵ N ₂]-L-Lysine
Buffer:	25 mM Tris-HCl, 100 mM glycine, pH 7.3
Storage:	Store at -80°C. Avoid repeated freeze-thaw cycles.
Stability:	Stable for 3 months from receipt of products under proper storage and handling conditions.
RefSeq:	NP_055958
RefSeq Size:	2835
RefSeq ORF:	816
Synonyms:	MAP1A; MetAP1A
Locus ID:	23173
UniProt ID:	P53582



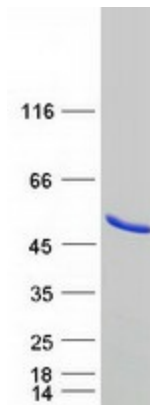
[View online »](#)

Cytogenetics: 4q23

Summary: Cotranslationally removes the N-terminal methionine from nascent proteins. The N-terminal methionine is often cleaved when the second residue in the primary sequence is small and uncharged (Met-Ala-, Cys, Gly, Pro, Ser, Thr, or Val). Required for normal progression through the cell cycle.[UniProtKB/Swiss-Prot Function]

Protein Families: Druggable Genome

Product images:



Coomassie blue staining of purified METAP1 protein (Cat# [TP303022]). The protein was produced from HEK293T cells transfected with METAP1 cDNA clone (Cat# [RC203022]) using MegaTran 2.0 (Cat# [TT210002]).