

## Product datasheet for PH303002

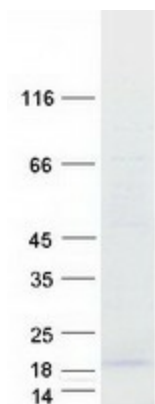
### C16orf13 (METTL26) (NM\_001040161) Human Mass Spec Standard

#### Product data:

Product Type:	Mass Spec Standards
Description:	C16orf13 MS Standard C13 and N15-labeled recombinant protein (NP_001035251)
Species:	Human
Expression Host:	HEK293
Expression cDNA Clone or AA Sequence:	RC203002
Predicted MW:	12 kDa
Protein Sequence:	>RC203002 protein sequence Red=Cloning site Green=Tags(s)  MLVAAAERKNDPILHVLRLQYLDPAQRGVRVLEVASGSGQHAAHFARAFPLAEWQPSDQDQRCLDRNPEWGLRDTALLEDLGKASGLLLERMVDMPPANNKCLIFRKN  TRTRPLEQKLI SEEDLAANDILDYKDDDDKV
Tag:	C-Myc/DDK
Purity:	> 80% as determined by SDS-PAGE and Coomassie blue staining
Concentration:	>0.05 µg/µL as determined by microplate BCA method
Labeling Method:	Labeled with [U- 13C6, 15N4]-L-Arginine and [U- 13C6, 15N2]-L-Lysine
Buffer:	25 mM Tris-HCl, 100 mM glycine, pH 7.3
Storage:	Store at -80°C. Avoid repeated freeze-thaw cycles.
Stability:	Stable for 3 months from receipt of products under proper storage and handling conditions.
RefSeq:	<a href="#">NP_001035251</a>
RefSeq Size:	570
RefSeq ORF:	321
Synonyms:	C16orf13; JFP2
Locus ID:	84326
UniProt ID:	<a href="#">Q96S19</a>
Cytogenetics:	16p13.3



[View online »](#)

**Product images:**

Coomassie blue staining of purified METTL26 protein (Cat# [TP303002]). The protein was produced from HEK293T cells transfected with METTL26 cDNA clone (Cat# [RC203002]) using MegaTran 2.0 (Cat# [TT210002]).