

Product datasheet for PH302975

CHCHD6 (NM_032343) Human Mass Spec Standard

Product data:

Product Type:	Mass Spec Standards
Description:	CHCHD6 MS Standard C13 and N15-labeled recombinant protein (NP_115719)
Species:	Human
Expression Host:	HEK293
Expression cDNA Clone or AA Sequence:	RC202975
Predicted MW:	26.5 kDa
Protein Sequence:	>RC202975 protein sequence Red=Cloning site Green=Tags(s) MGSTESSEGRRVSFGVDEEERVRVLQGVRLSENVNRMKEPSSPPPAPTSSSTFGLQDGNLRAPHKESTLP RSGSSGGQQPSGMKEGVKRYEQEHAAIQDKLFQVAKREREAATKHSKASLPTGEGSISHEEQKSVRLARE LESREAELRRRDTFYKEQLERIERKNAEMYKLSSEQFHEAASKMESTIKPRRVEPVCSGLQAQILHCYRD RPHEVLLCSDLVKAYQRCVSAAHKG TRTRPLEQKLISEEDLAANDILDYKDDDDKV
Tag:	C-Myc/DDK
Purity:	> 80% as determined by SDS-PAGE and Coomassie blue staining
Concentration:	>0.05 µg/µL as determined by microplate BCA method
Labeling Method:	Labeled with [U- ¹³ C ₆ , ¹⁵ N ₄]-L-Arginine and [U- ¹³ C ₆ , ¹⁵ N ₂]-L-Lysine
Buffer:	25 mM Tris-HCl, 100 mM glycine, pH 7.3
Storage:	Store at -80°C. Avoid repeated freeze-thaw cycles.
Stability:	Stable for 3 months from receipt of products under proper storage and handling conditions.
RefSeq:	<u>NP_115719</u>
RefSeq Size:	1020
RefSeq ORF:	705
Synonyms:	CHCM1; Mic25; MICOS25; PPP1R23
Locus ID:	84303
UniProt ID:	<u>Q9BRQ6</u>

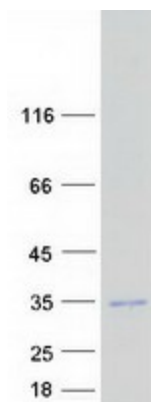


[View online »](#)

Cytogenetics: 3q21.3

Summary: Component of the MICOS complex, a large protein complex of the mitochondrial inner membrane that plays crucial roles in the maintenance of crista junctions, inner membrane architecture, and formation of contact sites to the outer membrane.[UniProtKB/Swiss-Prot Function]

Product images:



Coomassie blue staining of purified CHCHD6 protein (Cat# [TP302975]). The protein was produced from HEK293T cells transfected with CHCHD6 cDNA clone (Cat# [RC202975]) using MegaTran 2.0 (Cat# [TT210002]).