

Product datasheet for PH302972

PRADC1 (NM_032319) Human Mass Spec Standard

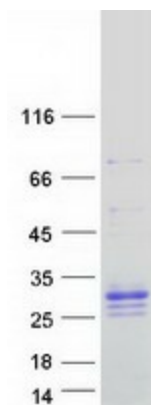
Product data:

Product Type:	Mass Spec Standards
Description:	C2orf7 MS Standard C13 and N15-labeled recombinant protein (NP_115695)
Species:	Human
Expression Host:	HEK293
Expression cDNA Clone or AA Sequence:	RC202972
Predicted MW:	21 kDa
Protein Sequence:	>RC202972 protein sequence Red=Cloning site Green=Tags(s) MVPGAAGWCCLVLWLPACVAAHGFRIDYLYFQVLSPGDIRYIFTATPAKDFGGIFHTRYEQIHLVPAEP PEACGELSNGFFIQDQIALVERGGCSFLSKTRVVQEHGGRAVIIISDNAVNDNSFYVEMIQDSTQRTADIP ALFLLGRDGYMIRRSLEQHGLPWAIIISIPNVNVTISIPTFELLQPPWTFW TRTRPLEQKLISEEDLAANDILDYKDDDDKV
Tag:	C-Myc/DDK
Purity:	> 80% as determined by SDS-PAGE and Coomassie blue staining
Concentration:	>0.05 µg/µL as determined by microplate BCA method
Labeling Method:	Labeled with [U- 13C6, 15N4]-L-Arginine and [U- 13C6, 15N2]-L-Lysine
Buffer:	25 mM Tris-HCl, 100 mM glycine, pH 7.3
Storage:	Store at -80°C. Avoid repeated freeze-thaw cycles.
Stability:	Stable for 3 months from receipt of products under proper storage and handling conditions.
RefSeq:	NP_115695
RefSeq Size:	1105
RefSeq ORF:	564
Synonyms:	C2orf7; PAP21
Locus ID:	84279
UniProt ID:	Q9BSG0



[View online »](#)

Cytogenetics:	2p13.2
Summary:	Plays a role in the modulation of physical activity and adiposity.[UniProtKB/Swiss-Prot Function]
Protein Families:	Protease, Transmembrane

Product images:

Coomassie blue staining of purified PRADC1 protein (Cat# [TP302972]). The protein was produced from HEK293T cells transfected with PRADC1 cDNA clone (Cat# [RC202972]) using MegaTran 2.0 (Cat# [TT210002]).