

Product datasheet for PH302965

ADPGK (NM_031284) Human Mass Spec Standard

Product data:

Product Type:	Mass Spec Standards
Description:	ADPGK MS Standard C13 and N15-labeled recombinant protein (NP_112574)
Species:	Human
Expression Host:	HEK293
Expression cDNA Clone or AA Sequence:	RC202965
Predicted MW:	54.1 kDa
Protein Sequence:	>RC202965 protein sequence Red=Cloning site Green=Tags(s)

MALWRGSAYAGFLALAVGCVFLLEPELPGSALRSLWSSLCLGPAPAPPGVPSPEGRLLAAAWDALIVRPVR
RWRRVAVGVNACVDVVL SGVKLLQALGLSPGNGKDHSILHSRNDLEEF IHFMGKGAAAERFF SDKETFH
DIAQVASEFPGAQH YVGGNAALIGQKFAANS DLK VLLCGPVGPKLHELDDNVFVPPE SLQEVDEFHLIL
EYQAGEEWGQLKAPHANRFIFSHDL SNGAMNLEVFVSSLEEFQPD LVLSGLHMEGQSKELQRKRLLE
VVTISIDIPTGIPVHLELASMTNRELMSSIVHQVFPVAVTSLGLNEQELLFLTQSASGPHSSLSSWNGVP
DVGMSDILFWILKEHGRSKSRASDLTRIHFTLVYHILATVDGHWANQLAAVAAGARVAGTQACATETI
DTSRVSLRAPQEFMTSHSEAGSRIVLNPKNPVVEWHREGISFHF TPVLVCKDPIRTVGLGDAISAEGLFY
SEVHPHY

TRTRPLEQKLI SEEDLAANDILDYKDDDDKV

Tag:	C-Myc/DDK
Purity:	> 80% as determined by SDS-PAGE and Coomassie blue staining
Concentration:	>0.05 µg/µL as determined by microplate BCA method
Labeling Method:	Labeled with [U- ¹³ C ₆ , ¹⁵ N ₄]-L-Arginine and [U- ¹³ C ₆ , ¹⁵ N ₂]-L-Lysine
Buffer:	25 mM Tris-HCl, 100 mM glycine, pH 7.3
Storage:	Store at -80°C. Avoid repeated freeze-thaw cycles.
Stability:	Stable for 3 months from receipt of products under proper storage and handling conditions.
RefSeq:	<u>NP_112574</u>
RefSeq Size:	2565
RefSeq ORF:	1491



[View online »](#)

Synonyms: 2610017G09Rik; ADP-GK

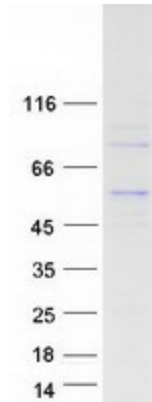
Locus ID: 83440

UniProt ID: [Q9BRR6](#)

Cytogenetics: 15q24.1

Summary: ADPGK (EC 2.7.1.147) catalyzes the ADP-dependent phosphorylation of glucose to glucose-6-phosphate and may play a role in glycolysis, possibly during ischemic conditions (Ronimus and Morgan, 2004 [PubMed 14975750]).[supplied by OMIM, Mar 2008]

Product images:



Coomassie blue staining of purified ADPGK protein (Cat# [TP302965]). The protein was produced from HEK293T cells transfected with ADPGK cDNA clone (Cat# [RC202965]) using MegaTran 2.0 (Cat# [TT210002]).