

Product datasheet for PH302955

PLA2G12A (NM_030821) Human Mass Spec Standard

Product data:

Product Type:	Mass Spec Standards
Description:	PLA2G12A MS Standard C13 and N15-labeled recombinant protein (NP_110448)
Species:	Human
Expression Host:	HEK293
Expression cDNA Clone or AA Sequence:	RC202955
Predicted MW:	20.9 kDa
Protein Sequence:	>RC202955 representing NM_030821 Red=Cloning site Green=Tags(s) MALLSRPALTL LLLLMAAVVRCQEQAQT TDWRATLKTIRNGVHKIDTYLNAALDLLGGEDGLCQYKCS DG SKPFPRYGYPSPNGCGSPLFGVHLNIGIPSLTKCCNQHDRCYETCGKSKNDCDEEFQYCLSKICRDVQ KTLGLTQH VQACETTVELLFD SVIHLGCKPYLDSQRAACRCHYEEKTDL TRTRPLEQKLI SEEDLAANDILDYKDDDDKV
Tag:	C-Myc/DDK
Purity:	> 80% as determined by SDS-PAGE and Coomassie blue staining
Concentration:	>0.05 µg/µL as determined by microplate BCA method
Labeling Method:	Labeled with [U- 13C6, 15N4]-L-Arginine and [U- 13C6, 15N2]-L-Lysine
Buffer:	25 mM Tris-HCl, 100 mM glycine, pH 7.3
Storage:	Store at -80°C. Avoid repeated freeze-thaw cycles.
Stability:	Stable for 3 months from receipt of products under proper storage and handling conditions.
RefSeq:	<u>NP_110448</u>
RefSeq Size:	1699
RefSeq ORF:	567
Synonyms:	GXII; PLA2G12; ROSSY
Locus ID:	81579
UniProt ID:	<u>Q9BZM1</u> , <u>Q542Y6</u>



[View online »](#)

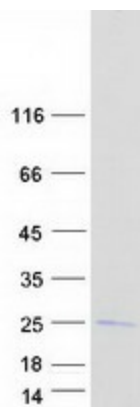
Cytogenetics: 4q25

Summary: Secreted phospholipase A2 (sPLA2) enzymes liberate arachidonic acid from phospholipids for production of eicosanoids and exert a variety of physiologic and pathologic effects. Group XII sPLA2s, such as PLA2G12A, have relatively low specific activity and are structurally and functionally distinct from other sPLA2s (Gelb et al., 2000 [PubMed 11031251]).[supplied by OMIM, Mar 2008]

Protein Families: Druggable Genome, Secreted Protein

Protein Pathways: alpha-Linolenic acid metabolism, Arachidonic acid metabolism, Ether lipid metabolism, Fc epsilon RI signaling pathway, Glycerophospholipid metabolism, GnRH signaling pathway, Linoleic acid metabolism, Long-term depression, MAPK signaling pathway, Metabolic pathways, Vascular smooth muscle contraction, VEGF signaling pathway

Product images:



Coomassie blue staining of purified PLA2G12A protein (Cat# [TP302955]). The protein was produced from HEK293T cells transfected with PLA2G12A cDNA clone (Cat# [RC202955]) using MegaTran 2.0 (Cat# [TT210002]).