

Product datasheet for PH302933

CKS1 (CKS1B) (NM_001826) Human Mass Spec Standard

Product data:

Product Type:	Mass Spec Standards
Description:	CKS1B MS Standard C13 and N15-labeled recombinant protein (NP_001817)
Species:	Human
Expression Host:	HEK293
Expression cDNA Clone or AA Sequence:	RC202933
Predicted MW:	9.7 kDa
Protein Sequence:	>RC202933 protein sequence Red=Cloning site Green=Tags(s) MSHKQIYYSDKYDDEEFYRHMVLPKDI AKLVPKTHLMSESEWRNLGVQQSQGWVHYMIHEPEPHILLFR RPLPKKPKK TRTRPLEQKLISEEDLAANDILDYKDDDDKV
Tag:	C-Myc/DDK
Purity:	> 80% as determined by SDS-PAGE and Coomassie blue staining
Concentration:	>0.05 µg/µL as determined by microplate BCA method
Labeling Method:	Labeled with [U- 13C6, 15N4]-L-Arginine and [U- 13C6, 15N2]-L-Lysine
Buffer:	25 mM Tris-HCl, 100 mM glycine, pH 7.3
Storage:	Store at -80°C. Avoid repeated freeze-thaw cycles.
Stability:	Stable for 3 months from receipt of products under proper storage and handling conditions.
RefSeq:	<u>NP_001817</u>
RefSeq Size:	834
RefSeq ORF:	237
Synonyms:	CKS1; ckshs1; PNAS-16; PNAS-18
Locus ID:	1163
UniProt ID:	<u>P61024</u> , <u>Q5T178</u>
Cytogenetics:	1q21.3



[View online »](#)

Summary:

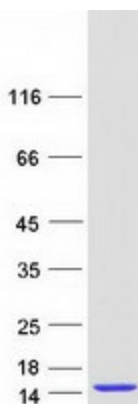
CKS1B protein binds to the catalytic subunit of the cyclin dependent kinases and is essential for their biological function. The CKS1B mRNA is found to be expressed in different patterns through the cell cycle in HeLa cells, which reflects a specialized role for the encoded protein. At least two transcript variants have been identified for this gene, and it appears that only one of them encodes a protein. [provided by RefSeq, Sep 2008]

Protein Families:

Druggable Genome, Stem cell - Pluripotency

Protein Pathways:

Pathways in cancer, Small cell lung cancer

Product images:

Coomassie blue staining of purified CKS1B protein (Cat# [TP302933]). The protein was produced from HEK293T cells transfected with CKS1B cDNA clone (Cat# [RC202933]) using MegaTran 2.0 (Cat# [TT210002]).