

Product datasheet for PH302926

ROR alpha (RORA) (NM_134261) Human Mass Spec Standard

Product data:

Product Type:	Mass Spec Standards
Description:	RORA MS Standard C13 and N15-labeled recombinant protein (NP_599023)
Species:	Human
Expression Host:	HEK293
Expression cDNA Clone or AA Sequence:	RC202926
Predicted MW:	58.8 kDa
Protein Sequence:	>RC202926 representing NM_134261 Red=Cloning site Green=Tags(s)

MESAPAAPDPAASEPGSSGADAAAGSRETPLNQESARKSEPPAPVRRQSYSSSTRGISVTKKTHTSQIEI
IPCKICGDKSSGIHYGVITCEGCKGFFRRSQSNATYSCPRQKNCLIDRTSRNRCQHCLQKCLAVGMSR
DAVKFGRMSKKQRDSL YAEVQKHRMQQQQRDHQQQPGEAEPLTPTYNISANGLTELHDDL SNYIDGHTPE
GSKADSAVSSFYLDIQSPDQSGLDINGIKPEPICDYTPASGFFPYCSFTNGETSPTVSM AELEHLAQNI
SKSHLET CQYLREELQQITWQTF LQEEIENYQNKQREVMWQLCAIKITEAIQYVVEFAKRIDGMELCQN
DQIVLLKAGSLEVV FIRMCRAFDSQNN TVYFDGKYASPDVFKSLGCEDFISFVFEFGKSLCSMHLTEDEI
ALFSAFV LMSADRSWLQEKVKIEKLQKIQ LALQHV LQKNHREDGILTKLICKVSTLRALCGRHTEKLMA
FKAIYPDIVRLHFPLYKELFTSEFEPAMQIDG

TRTRPLEQKLI SEEDLAANDILDYKDDDDKV

Tag:	C-Myc/DDK
Purity:	> 80% as determined by SDS-PAGE and Coomassie blue staining
Concentration:	>0.05 µg/µL as determined by microplate BCA method
Labeling Method:	Labeled with [U- ¹³ C ₆ , ¹⁵ N ₄]-L-Arginine and [U- ¹³ C ₆ , ¹⁵ N ₂]-L-Lysine
Buffer:	25 mM Tris-HCl, 100 mM glycine, pH 7.3
Storage:	Store at -80°C. Avoid repeated freeze-thaw cycles.
Stability:	Stable for 3 months from receipt of products under proper storage and handling conditions.
RefSeq:	NP_599023
RefSeq Size:	1847
RefSeq ORF:	1569



[View online »](#)

Synonyms: IDDECA; NR1F1; ROR1; ROR2; ROR3; RZR-ALPHA; RZRA

Locus ID: 6095

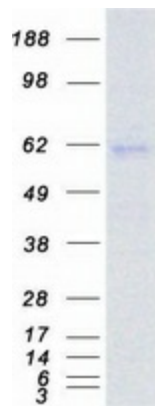
UniProt ID: [P35398](#)

Cytogenetics: 15q22.2

Summary: The protein encoded by this gene is a member of the NR1 subfamily of nuclear hormone receptors. It can bind as a monomer or as a homodimer to hormone response elements upstream of several genes to enhance the expression of those genes. The encoded protein has been shown to interact with NM23-2, a nucleoside diphosphate kinase involved in organogenesis and differentiation, as well as with NM23-1, the product of a tumor metastasis suppressor candidate gene. Also, it has been shown to aid in the transcriptional regulation of some genes involved in circadian rhythm. Four transcript variants encoding different isoforms have been described for this gene. [provided by RefSeq, Feb 2014]

Protein Families: Druggable Genome, Nuclear Hormone Receptor, Transcription Factors

Product images:



Coomassie blue staining of purified RORA protein (Cat# [TP302926]). The protein was produced from HEK293T cells transfected with RORA cDNA clone (Cat# [RC202926]) using MegaTran 2.0 (Cat# [TT210002]).