

Product datasheet for PH302924

Nuclear Factor Erythroid Derived 2 (NFE2) (NM_006163) Human Mass Spec Standard

Product data:

Product Type:	Mass Spec Standards
Description:	NFE2 MS Standard C13 and N15-labeled recombinant protein (NP_006154)
Species:	Human
Expression Host:	HEK293
Expression cDNA Clone or AA Sequence:	RC202924
Predicted MW:	41.5 kDa
Protein Sequence:	>RC202924 protein sequence Red=Cloning site Green=Tags(s) MSPCPPQQSRNRVIQLSTSELGEMELTWQEIMSITELQGLNAPSEPSFEPQAPAPYLGPPPTTYCPSI HPDSGFLLPPPPYELPASTSHVDPYPYSYGNMAIPVSKPLSLGLLSEPLQDPLALLDIGLPAGPPKPQE DPESDGLSLNYSDAESLELEGTEAGRRESEYVEMYPVEYPYSLMPNSLAHSNYTLPAEETPLALEPSSG PVRAKPTARGEAGSRDERRALAMKIPFPTDKIVNLPVDDFNELLARYPLTESQLALVRDIRRRGKNKVA QNCRRKLETIVQLERELERLTNERERLLRARGEADRTLEVMRQQLTEL YRDIFQHLRDESGNSYSPEEY ALQQAADGTIFLVPRGKMEATD TRTRPLEQKLI SEEDLAANDILDYKDDDDKV
Tag:	C-Myc/DDK
Purity:	> 80% as determined by SDS-PAGE and Coomassie blue staining
Concentration:	>0.05 µg/µL as determined by microplate BCA method
Labeling Method:	Labeled with [U- ¹³ C ₆ , ¹⁵ N ₄]-L-Arginine and [U- ¹³ C ₆ , ¹⁵ N ₂]-L-Lysine
Buffer:	25 mM Tris-HCl, 100 mM glycine, pH 7.3
Storage:	Store at -80°C. Avoid repeated freeze-thaw cycles.
Stability:	Stable for 3 months from receipt of products under proper storage and handling conditions.
RefSeq:	NP_006154
RefSeq Size:	1697
RefSeq ORF:	1119
Synonyms:	NF-E2; p45
Locus ID:	4778



[View online »](#)

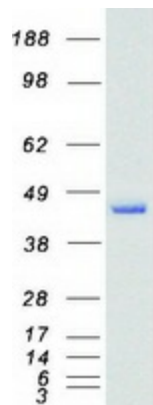
UniProt ID: [Q16621](#), [A8K3E0](#)

Cytogenetics: 12q13.13

Summary: Component of the NF-E2 complex essential for regulating erythroid and megakaryocytic maturation and differentiation. Binds to the hypersensitive site 2 (HS2) of the beta-globin control region (LCR). This subunit (NFE2) recognizes the TCAT/C sequence of the AP-1-like core palindrome present in a number of erythroid and megakaryocytic gene promoters. Requires MAFK or other small MAF proteins for binding to the NF-E2 motif. May play a role in all aspects of hemoglobin production from globin and heme synthesis to procurement of iron. [UniProtKB/Swiss-Prot Function]

Protein Families: Transcription Factors

Product images:



Coomassie blue staining of purified NFE2 protein (Cat# [TP302924]). The protein was produced from HEK293T cells transfected with NFE2 cDNA clone (Cat# [RC202924]) using MegaTran 2.0 (Cat# [TT210002]).