

Product datasheet for PH302923

DLK (DLK1) (NM_003836) Human Mass Spec Standard

Product data:

Product Type:	Mass Spec Standards
Description:	DLK1 MS Standard C13 and N15-labeled recombinant protein (NP_003827)
Species:	Human
Expression Host:	HEK293
Expression cDNA Clone or AA Sequence:	RC202923
Predicted MW:	41.2 kDa
Protein Sequence:	>RC202923 protein sequence Red=Cloning site Green=Tags(s) MTATEALLRVLLLLLAFGHSTYGAECFPACNPQNGFCEDDNCVRCQPGWQGPLCDQCVTSPGCLHGLCGE PGQCICTDGDGELCDRDVRACSSAPCANNGTCSVSLDDGLYECSCAPGYSKDCQKKGPCVINGSPCQH GGTCVDDEGRASHASCLCPPGFSGNFCEIVANSCTPNPCENDGVCTDIGGDFRCRCPAGFIDKTCSPVPT NCASSPCQNGGTCLQHTQVSYECLCKPEFTGLTCVKKRALSPQQVTRLPNGYGLAYRLTPGVHELVPQQP EHRILKVSMEKLNKKTPLLTEGQAICFTILGVL TSLVVLGTVGI VFLNKCETWVSNLRYNHMLRKKKLL LQYNSGEDLAVNIIFPEKIDMTTFSKEAGDEEI TRTRPLEQKLI SEEDLAANDILDYKDDDDKV
Tag:	C-Myc/DDK
Purity:	> 80% as determined by SDS-PAGE and Coomassie blue staining
Concentration:	>0.05 µg/µL as determined by microplate BCA method
Labeling Method:	Labeled with [U- ¹³ C ₆ , ¹⁵ N ₄]-L-Arginine and [U- ¹³ C ₆ , ¹⁵ N ₂]-L-Lysine
Buffer:	25 mM Tris-HCl, 100 mM glycine, pH 7.3
Storage:	Store at -80°C. Avoid repeated freeze-thaw cycles.
Stability:	Stable for 3 months from receipt of products under proper storage and handling conditions.
RefSeq:	NP_003827
RefSeq Size:	1599
RefSeq ORF:	1149
Synonyms:	Delta1; DLK; DLK-1; FA1; pG2; Pref-1; PREF1; ZOG
Locus ID:	8788



[View online »](#)

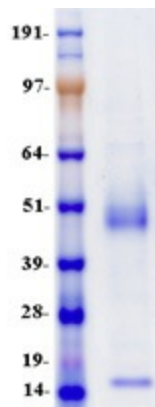
UniProt ID: [P80370](#), [A0A024R6L1](#), [A8K019](#)

Cytogenetics: 14q32.2

Summary: This gene encodes a transmembrane protein that contains multiple epidermal growth factor repeats that functions as a regulator of cell growth. The encoded protein is involved in the differentiation of several cell types including adipocytes. This gene is located in a region of chromosome 14 frequently showing unparental disomy, and is imprinted and expressed from the paternal allele. A single nucleotide variant in this gene is associated with child and adolescent obesity and shows polar overdominance, where heterozygotes carrying an active paternal allele express the phenotype, while mutant homozygotes are normal. [provided by RefSeq, Nov 2015]

Protein Families: Druggable Genome, ES Cell Differentiation/IPS, Transmembrane

Product images:



Coomassie blue staining of purified DLK1 protein (Cat# [TP302923]). The protein was produced from HEK293T cells transfected with DLK1 cDNA clone (Cat# [RC202923]) using MegaTran 2.0 (Cat# [TT210002]).