

Product datasheet for PH302908

MOSPD3 (NM_023948) Human Mass Spec Standard

Product data:

Product Type:	Mass Spec Standards
Description:	MOSPD3 MS Standard C13 and N15-labeled recombinant protein (NP_076438)
Species:	Human
Expression Host:	HEK293
Expression cDNA Clone or AA Sequence:	RC202908
Predicted MW:	25.5 kDa
Protein Sequence:	>RC202908 protein sequence Red=Cloning site Green=Tags(s) MRRGAPQDQELVGP GPPGRGSRGAPPPLGPVVPVLVFPDLVFRADQRSGPRQLLTLYNPTGTALRFRVL CTAPAKYTVFDAEGYVKPQSCIDIVIRHVAPIPSHYDVQDRFRIELSEEGAEGRVVGRKDISILRAPAY PLELQGGPDPAPRPGPPAGTPPPPTARHFQEHRPQQLATSSFLLFLLTGIVSVAFLLLPLPDELGSQLPQV LHVSLGQKLVAAYVLGLLTMVFLRT TRTRPLEQKLI SEEDLAANDILDYKDDDDKV
Tag:	C-Myc/DDK
Purity:	> 80% as determined by SDS-PAGE and Coomassie blue staining
Concentration:	>0.05 µg/µL as determined by microplate BCA method
Labeling Method:	Labeled with [U- 13C6, 15N4]-L-Arginine and [U- 13C6, 15N2]-L-Lysine
Buffer:	25 mM Tris-HCl, 100 mM glycine, pH 7.3
Storage:	Store at -80°C. Avoid repeated freeze-thaw cycles.
Stability:	Stable for 3 months from receipt of products under proper storage and handling conditions.
RefSeq:	NP_076438
RefSeq Size:	1213
RefSeq ORF:	705
Synonyms:	CDS3; NET30
Locus ID:	64598
UniProt ID:	O75425



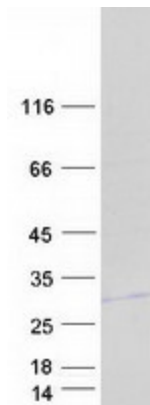
[View online »](#)

Cytogenetics: 7q22.1

Summary: This gene encodes a multi-pass membrane protein with a major sperm protein (MSP) domain. The deletion of a similar mouse gene is associated with defective cardiac development and neonatal lethality. Alternate transcriptional splice variants, encoding different isoforms, have been described. [provided by RefSeq, Jul 2008]

Protein Families: Transmembrane

Product images:



Coomassie blue staining of purified MOSPD3 protein (Cat# [TP302908]). The protein was produced from HEK293T cells transfected with MOSPD3 cDNA clone (Cat# [RC202908]) using MegaTran 2.0 (Cat# [TT210002]).