

## Product datasheet for PH302890

### MCC (NM\_002387) Human Mass Spec Standard

#### Product data:

Product Type:	Mass Spec Standards
Description:	MCC MS Standard C13 and N15-labeled recombinant protein (NP_002378)
Species:	Human
Expression Host:	HEK293
Expression cDNA Clone or AA Sequence:	RC202890
Predicted MW:	93.1 kDa
Protein Sequence:	>RC202890 protein sequence Red=Cloning site Green=Tags(s)

MNSGVAMKYGNDSSAELSELHSAALASLKGDIVELNKRLQQTERERDLLEKKLAKAQCEQSHLMREHEDV  
QERTTLRYEERITELHSVIAELNKKIDRLQGGTTIREEDEYSELRSEL S QSQHEVNEDSRSMDDQDQTSVSI  
PENQSTMVTADMNDCSDLNSELQRVLTGLENNVCGRKKSSCSLSVAEVDRIEQLTTASEHCDLAIKTVE  
EIEGVLGRDLYPNLAEERSRWEKELAGLREENESLTAMLCSKEEELNRTKATMNAIREERDLRRRVREL  
QTRLQSVQATGPSSPGRLTSTNRPINPSTGELSTSSSSNDIPIAKIAERVKLSKTRSESSSSDRPVLGSE  
ISSIGVSSVAEHLAHSQDCSNIQEIFQTLYSHGSAISESKIREFEVETERLNSRIEHLKSQNDLLTIT  
LEECKSNAERMSMLVGKYESNATALRLALQYSEQCIEAYELLLALAESEQSLILGQFRAAGVGSSSPGDQS  
GDENITQMLKRAHDCRKTAEAAKALLMKLDGSCGGAFVAVAGCSVQPWESLSSNSHTSTTSTASSCDTE  
FTKEDEQRLKDYIQQKNDRAAVKLTMLELESIHIDPLSYDVKPRGDSQRLDLENVLMQELMAMKEEMA  
ELKAQLYLLEKEKKALELKLSTREAQEQAYLVHIEHLKSEVEEQEQRMRSLSSTSSGSKDKPGKECADA  
ASPALSLAELRTTSENELAAEF TNAIRREKCLKARVQELVSALERLTKSSEIRHQQAQSAEFVNDLKRANS  
NLVAAYEKAKKKHQKLLKLESQMMAMVERHETQVRMLKQRIALLEEENS RPHTNETSL

TRTRPLEQKLI SEEDLAANDILDYKDDDDKV

Tag:	C-Myc/DDK
Purity:	> 80% as determined by SDS-PAGE and Coomassie blue staining
Concentration:	>0.05 µg/µL as determined by microplate BCA method
Labeling Method:	Labeled with [U- <sup>13</sup> C <sub>6</sub> , <sup>15</sup> N <sub>4</sub> ]-L-Arginine and [U- <sup>13</sup> C <sub>6</sub> , <sup>15</sup> N <sub>2</sub> ]-L-Lysine
Buffer:	25 mM Tris-HCl, 100 mM glycine, pH 7.3
Storage:	Store at -80°C. Avoid repeated freeze-thaw cycles.
Stability:	Stable for 3 months from receipt of products under proper storage and handling conditions.
RefSeq:	<u><a href="#">NP_002378</a></u>



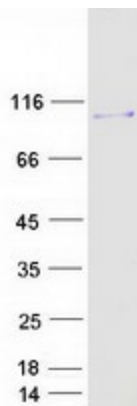
[View online »](#)

RefSeq Size: 8223  
RefSeq ORF: 2487  
Synonyms: MCC1  
Locus ID: 4163  
UniProt ID: [P23508](#)  
Cytogenetics: 5q22.2

**Summary:** This gene is a candidate colorectal tumor suppressor gene that is thought to negatively regulate cell cycle progression. The orthologous gene in the mouse expresses a phosphoprotein associated with the plasma membrane and membrane organelles, and overexpression of the mouse protein inhibits entry into S phase. Multiple transcript variants encoding different isoforms have been found for this gene. [provided by RefSeq, Jul 2008]

**Protein Families:** Druggable Genome

### Product images:



Coomassie blue staining of purified MCC protein (Cat# [TP302890]). The protein was produced from HEK293T cells transfected with MCC cDNA clone (Cat# [RC202890]) using MegaTran 2.0 (Cat# [TT210002]).