

Product datasheet for PH302884

TSSC3 (PHLDA2) (NM_003311) Human Mass Spec Standard

Product data:

| | |
|---------------------------------------|--|
| Product Type: | Mass Spec Standards |
| Description: | PHLDA2 MS Standard C13 and N15-labeled recombinant protein (NP_003302) |
| Species: | Human |
| Expression Host: | HEK293 |
| Expression cDNA Clone or AA Sequence: | RC202884 |
| Predicted MW: | 17.1 kDa |
| Protein Sequence: | >RC202884 protein sequence Red =Cloning site Green =Tags(s) MKSPDEVLRERGELEKRSDSLFQLWKKKRGVLTSDRLSLFPASPRARPKELRFHSILKVDVERTGKYVYF TIVTTDHKEIDFRCAGESCWNAALALIDFQNRRLQDFRSRQERTAPAAPAEDAVAAAAAAPSEPSEP SRPSPQPKPRTP TR TRPLEQKLISEEDLAANDILDYKDDDDKV |
| Tag: | C-Myc/DDK |
| Purity: | > 80% as determined by SDS-PAGE and Coomassie blue staining |
| Concentration: | >0.05 µg/µL as determined by microplate BCA method |
| Labeling Method: | Labeled with [U- ¹³ C ₆ , ¹⁵ N ₄]-L-Arginine and [U- ¹³ C ₆ , ¹⁵ N ₂]-L-Lysine |
| Buffer: | 25 mM Tris-HCl, 100 mM glycine, pH 7.3 |
| Storage: | Store at -80°C. Avoid repeated freeze-thaw cycles. |
| Stability: | Stable for 3 months from receipt of products under proper storage and handling conditions. |
| RefSeq: | NP_003302 |
| RefSeq Size: | 937 |
| RefSeq ORF: | 456 |
| Synonyms: | BRW1C; BWR1C; HLDA2; IPL; TSSC3 |
| Locus ID: | 7262 |
| UniProt ID: | Q53GA4 |



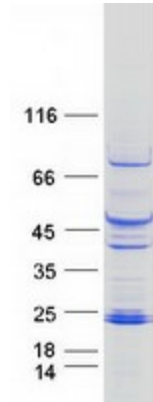
[View online »](#)

Cytogenetics: 11p15.4

Summary: This gene is located in a cluster of imprinted genes on chromosome 11p15.5, which is considered to be an important tumor suppressor gene region. Alterations in this region may be associated with the Beckwith-Wiedemann syndrome, Wilms tumor, rhabdomyosarcoma, adrenocortical carcinoma, and lung, ovarian, and breast cancer. This gene has been shown to be imprinted, with preferential expression from the maternal allele in placenta and liver. [provided by RefSeq, Oct 2010]

Protein Families: Druggable Genome

Product images:



Coomassie blue staining of purified PHLDA2 protein (Cat# [TP302884]). The protein was produced from HEK293T cells transfected with PHLDA2 cDNA clone (Cat# [RC202884]) using MegaTran 2.0 (Cat# [TT210002]).