

## Product datasheet for PH302845

### THG1L (NM\_017872) Human Mass Spec Standard

#### Product data:

|                                       |  |
|---------------------------------------|--|
| Product Type:                         | Mass Spec Standards  |
| Description:                          | THG1L MS Standard C13 and N15-labeled recombinant protein (NP_060342)  |
| Species:                              | Human  |
| Expression Host:                      | HEK293   |
| Expression cDNA Clone or AA Sequence: | RC202845   |
| Predicted MW:                         | 34.8 kDa   |
| Protein Sequence:                     | >RC202845 protein sequence<br><span style="color: red;">Red</span> =Cloning site <span style="color: green;">Green</span> =Tags(s) |

MWGACKVKVHDSLATISITLRRYLRLGATMAKSKFEYVRDFEADDTCLAHCVVVRLDGRNFHRFAEKHN  
 FAKPNDLRALQLMTKCAQTVMEELDIVIAYGQSDEYSFVKRKTNWFKRRASKFMTHVASQFASSYVFY  
 WRDYFEDQPLLPPGFDGRVVVPSNQLKDYLSWRQADCHINNLYNTVFWALIQQSGLTPVQAQGRLQG  
 TLAADKNEILFSEFNINYNNEPPMYRGTVLIWQKVDEVMTKEIKLPTEMEGKKMAVTRTRTKPVPLHCD  
 IIGDAFWKEHPEILDEDS

TRTRPLEQKLISEEDLAANDILDYKDDDDKV

|                  |  |
|------------------|--|
| Tag:             | C-Myc/DDK  |
| Purity:          | > 80% as determined by SDS-PAGE and Coomassie blue staining  |
| Concentration:   | >0.05 µg/µL as determined by microplate BCA method   |
| Labeling Method: | Labeled with [U- <sup>13</sup> C <sub>6</sub> , <sup>15</sup> N <sub>4</sub> ]-L-Arginine and [U- <sup>13</sup> C <sub>6</sub> , <sup>15</sup> N <sub>2</sub> ]-L-Lysine |
| Buffer:          | 25 mM Tris-HCl, 100 mM glycine, pH 7.3   |
| Storage:         | Store at -80°C. Avoid repeated freeze-thaw cycles.   |
| Stability:       | Stable for 3 months from receipt of products under proper storage and handling conditions.   |
| RefSeq:          | <u><a href="#">NP_060342</a></u>   |
| RefSeq Size:     | 1320   |
| RefSeq ORF:      | 894  |
| Synonyms:        | hTHG1; ICF45; IHG-1; IHG1; SCAR28; THG1  |
| Locus ID:        | 54974  |

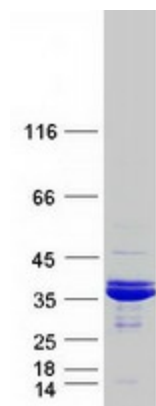

[View online »](#)

UniProt ID: [Q9NWX6](#)

Cytogenetics: 5q33.3

**Summary:** The protein encoded by this gene is a mitochondrial protein that is induced by high levels of glucose and is associated with diabetic nephropathy. The encoded protein appears to increase mitochondrial biogenesis, which could lead to renal fibrosis. Another function of this protein is that of a guanylttransferase, adding GMP to the 5' end of tRNA(His). Several transcript variants encoding different isoforms have been found for this gene. [provided by RefSeq, Dec 2015]

### Product images:



Coomassie blue staining of purified THG1L protein (Cat# [TP302845]). The protein was produced from HEK293T cells transfected with THG1L cDNA clone (Cat# [RC202845]) using MegaTran 2.0 (Cat# [TT210002]).