

Product datasheet for PH302832

RAB14 (NM_016322) Human Mass Spec Standard

Product data:

Product Type:	Mass Spec Standards
Description:	RAB14 MS Standard C13 and N15-labeled recombinant protein (NP_057406)
Species:	Human
Expression Host:	HEK293
Expression cDNA Clone or AA Sequence:	RC202832
Predicted MW:	23.9 kDa
Protein Sequence:	>RC202832 protein sequence Red =Cloning site Green =Tags(s) MATAPYNSYIFKYIIIGDMGVGKSCLLHQFTEKKFMADCPHTIGVEFGTRIIIEVSGQKIKLQIWDTAGQ ERFRAVTRSYYRGAAGALMVDITRRSTYNHLSSWLTARNLTNPNTVIILIGNKADLEAQRDVTYEEAK QFAEENGLLFLEASAKTGENVEDAFLEAAKKIYQNIQDGLDLNAAESGVQHKSAPQGRLTSEPQPQR EGCGC TRTRP LEQKLISEEDLAANDILDYKDDDDK V
Tag:	C-Myc/DDK
Purity:	> 80% as determined by SDS-PAGE and Coomassie blue staining
Concentration:	>0.05 µg/µL as determined by microplate BCA method
Labeling Method:	Labeled with [U- ¹³ C ₆ , ¹⁵ N ₄]-L-Arginine and [U- ¹³ C ₆ , ¹⁵ N ₂]-L-Lysine
Buffer:	25 mM Tris-HCl, 100 mM glycine, pH 7.3
Storage:	Store at -80°C. Avoid repeated freeze-thaw cycles.
Stability:	Stable for 3 months from receipt of products under proper storage and handling conditions.
RefSeq:	NP_057406
RefSeq Size:	4379
RefSeq ORF:	645
Synonyms:	FBP; RAB-14
Locus ID:	51552
UniProt ID:	P61106 , A0A024R845



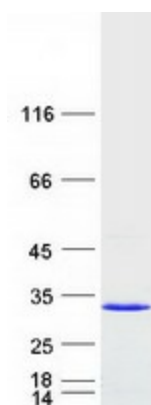
[View online »](#)

Cytogenetics: 9q33.2

Summary: RAB14 belongs to the large RAB family of low molecular mass GTPases that are involved in intracellular membrane trafficking. These proteins act as molecular switches that flip between an inactive GDP-bound state and an active GTP-bound state in which they recruit downstream effector proteins onto membranes (Junutula et al., 2004 [PubMed 15004230]). [supplied by OMIM, Mar 2009]

Protein Families: Druggable Genome

Product images:



Coomassie blue staining of purified RAB14 protein (Cat# [TP302832]). The protein was produced from HEK293T cells transfected with RAB14 cDNA clone (Cat# [RC202832]) using MegaTran 2.0 (Cat# [TT210002]).